



— *Product Catalogue* —





BUFFET CATERING & DISPLAY

- a. Cast Iron Skillet Additions
pg. 23
- b. Stainless Steel Straight-Sided Bowls
pg. 29
- c. Contemporary Melamine Collection
pg. 30

- d. Frostone Acacia Collection
pg. 34
- e. Frostone Naturals Collection
pg. 35
- f. Frostone Slate Collection
pg. 36 - 37

- g. Frostone Wavy Bowls
pg. 38
- h. Fruit Baskets
pg. 40
- i. Remington Collection
pg. 44 - 46



BUFFET CATERING & DISPLAY

a. Gastronorm Wood
Crate Additions
pg. 48

b. Mini Table
Tray Stands
pg. 50

c. Cake Sets
Stands & Covers
pg. 54 - 55

d. Single Serve Jars
with Lids
pg. 57

e. Melamine Buffet
Tents
pg. 61

f. Card & Number
Holders
pg. 63

g. Stainless Steel
Tags
pg. 65

h. Bamboo
Picks
pg. 66 - 69

i. Disposables
Additions
pg. 70 - 73

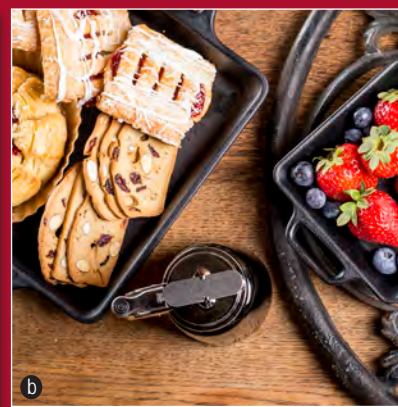


BEVERAGE SOLUTIONS

- a. Glass Beverage Dispensers
pg. 80
- b. Double Wall Beverage Tub
pg. 86
- c. Condensation Drip Tray
pg. 92

TABLETOP SOLUTIONS

- d. Stackable Gravy Boat
pg. 97
- e. Glass Jar with Rotating Tops
pg. 104
- f. Mini Mason Jar Shakers
pg. 105
- g. Mason Jar Shakers
pg. 111
- h. Chalkboard Vases
pg. 118



SERVING SOLUTIONS

- a. Tasting Jars
pg. 126
- b. Melamine with
Cast Iron Finish
pg. 136
- c. Tapas Sets
pg. 139

- d. Brickhouse
Collection Additions
pg. 148
- e. High Chairs
pg. 161

BAR SOLUTIONS

- f. First In, First Out
Condiment Dispensers
pg. 236
- g. Stainless Steel
Ice Scoop Additions
pg. 242
- h. Ice Buckets
& Wine Servers
pg. 246



SAFER FOOD SOLUTIONS

TableCraft® Provides Solutions to protect & serve your customers.

From prepping to serving food, TableCraft offers Safer Food Solutions™ that provide food safe practices, improve efficiencies, reduce waste, and promote cleanliness and sanitation within your establishment.

COLOUR-CODED SYSTEMS HELP PREVENT CROSS-CONTAMINATION

Cross-contamination is the transfer of harmful bacteria to food from other foods. TableCraft's **colour-coded cutting boards** and utensils promote food safe practices by designating foods to colours for safer food prep.



COLOUR-CODING SPEEDS UP PREPARATION

Colour-coding speeds up food preparation while providing a system that ensures accuracy and organisation.

Our **Widemouth™ Silicone Sauce Bands** allow you to easily identify contents. Custom imprinting available to label with your own unique sauces and condiments.



PourMaster® Silicone Bands make identifying the contents of your PourMaster® easy! Dishwasher safe silicone bands are flexible and easily fit onto the neck of your PourMaster®.

FOOD ROTATION MANAGES THE QUALITY AND SAFETY OF FOOD.

Minimise waste, ensure proper food rotation, and save time with our selection of **Dualway™** and **NSF® InvertaTop™** squeeze bottles.



CROSS-CONTAMINATION FROM FOOD AND FOOD CONTACT SURFACES

One of the most overlooked vehicles of cross-contamination are cardboard film & foil dispensers. Cardboard is absorbent and cannot be washed easily; allowing it to easily harbor microbial germs, contaminants and pests.

Keep your film, foil and food more sanitary while saving money with our selection of Film & Foil Dispensers.



COLOUR-CODED SYSTEMS HELP PREVENT CROSS-CONTAMINATION

Cross-contamination is the transfer of harmful bacteria to food from other foods. TableCraft's colour-coded cutting boards and utensils promote food safe practices by designating foods to colours for safer food prep.

CLEANLINESS HELPS PREVENT FOODBORNE ILLNESS

Cleanliness is a major factor in preventing foodborne illness. Everything that touches food should be clean. Our **Ridal Collection™** **Serving Baskets** are dishwasher & microwave safe – allowing your kitchen to run more efficiently by saving time and keeping to Safer Food standards. Our **NSF® Ribbed Ramekin Family** allows condiments to be plated in an easy to clean, portion controlled manner. Our **PourMaster®** series keeps your bar tools more sanitary and easier to clean.



PREVENT “CROSS-CONTACT” OF KNOWN FOOD ALLERGENS OR GLUTEN

TableCraft has the dedicated tools to help prepare and label foods for your **allergen sensitive and gluten intolerant** guests. Adhering to a process assures the elimination of cross-contact of known allergens to your food prep and serving solutions.



KEEP YOUR CONTENTS SAFE AND COVERED

Our **Tethered Caps** keep contaminants and foreign particles out of your squeeze bottles or oil & vinegar bottles and ensure safe food practices in your kitchen. Squeeze bottle tethered caps are available in assorted packs; allowing you to colour-code your squeeze bottle contents.



ENSURE SAFE & SANITARY PRACTICES BEHIND YOUR BAR

TableCraft's **Universal Liquor Pourer Covers and Dust Caps** are the sanitary solution to keep contaminants out of your liquor bottles. Liquor Pourer Covers and Dust Caps comply to most local bar regulations and are dishwasher safe.







BUFFET, CATERING & DISPLAY SOLUTIONS

Elevate Your Brand Image

TableCraft offers an array of products that elevate your brand image, enhance your buffet line and deliver dependable, durable solutions.

PROFESSIONAL BAKEWARE
CAST ALUMINIUM Page 10 - 16

COLD HOLDING SERVERS
& DISPLAYS Page 17

HOT SERVING SOLUTIONS
& COOKWARE Page 18 - 23

CHAFERS
& SERVERS Page 24 - 27

BUFFET
COLLECTIONS Page 28 - 39

RISERS
& DISPLAYS Page 40 - 55

BUFFET ACCESSORIES
& DISPOSABLES Page 56 - 73

DURACOAT™

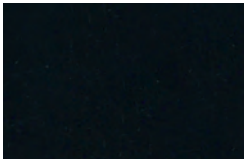
COATED CAST ALUMINIUM COLOURS



neutrals



N: Natural/Pewter



BK: Black



W: White

trending colours



PB: Pigeon Blue



MM: Modern Mint



SNX: Sunset Orange



X: Orange



Y: Yellow

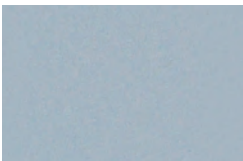


R: Red

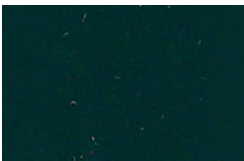


LG: Lime Green

traditional colours



GY: Grey



HGN: Hunter Green



SBL: Sky Blue



CP: Copper



BR: Brown



GN: Green

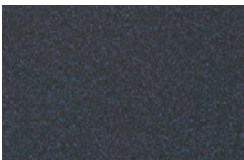


CBL: Cobalt Blue

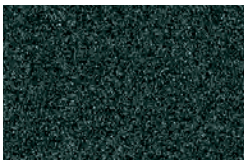
granite & speckled patterns:



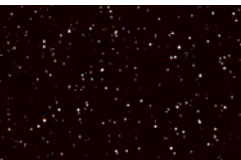
GR: Granite



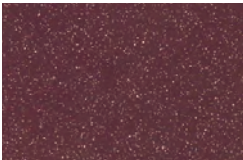
MBS: Midnight w/Blue Speckle



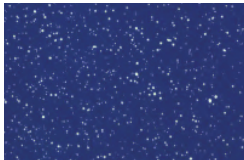
HGNS: Hunter Green w/White Speckle



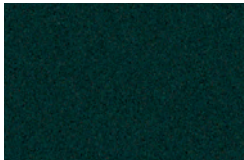
MS: Midnight Speckle



MRS: Maroon Speckle



BS: Blue Speckle



BKGS: Black w/Green Speckle

24 OPTIONS
ARE AVAILABLE
FOR CAST
ALUMINIUM ITEMS.
WHEN ORDERING,
ADD THE COLOUR
CODE TO THE END
OF THE
ITEM NUMBER.

TO ORDER:

CW1420	SBL
item number	colour code

PROFESSIONAL



BAKEWARE

BY



Professional Bakeware by TableCraft has a deep-seated history of bringing high quality products to market that are dependable and promote food safe practices.

Handcrafted Sand Cast Aluminium offers a virtually unbreakable design, available in 23 colourful options plus natural, and conducts or maintains temperature for an extended period of time; better than most other serving options in the market. Mix and match serving pieces to create an eye catching presentation to enhance your brand image.

Our DuraCoat™ cast coating is NSF® listed, dishwasher safe, and safe for temperatures from -30 up to 63°C.

TableCraft provides a convenient and unique recoating program. Please contact your dealer for a quote and a recoating authorisation (RCA) to refinish your cast Aluminium serveware.

Please allow up to 8-12 weeks for TableCraft to refinish your cast Aluminium project.



CONTEMPORARY COLLECTION™



Straight-Sided bowls save space and are available in a variety of sizes and colours for attractive presentation. Handcrafted Sand Cast Aluminium maintains proper serving temperatures longer while providing a virtually unbreakable solution.

15 CM HEIGHT



a

Item	Description	Capacity	Min Order/ Case Pack	Natural (€)	Colour Coated (€)
a. CW4036	Straight-Sided Square Bowl, 25.5 x 25.5 x 15 cm	9 Litre	1 / 1	140.38 ea	155.95 ea
CW4034	Straight-Sided Square Bowl, 51 x 25.5 x 15 cm	18.5 Litre	1 / 1	142.56 ea	176.93 ea

4 CM HEIGHT



b

Item #	Description	Capacity	Min Order/ Case Pack	Natural (€)	Colour Coated (€)
b. CW4014	Straight-Sided Square Bowl, 25.5 x 25.5 x 4 cm	1.5 Litre	1 / 1	76.92 ea	101.40 ea



COATED CAST ALUMINIUM COLOURS SEE PAGE 10 FOR DETAILS

Item #	Description	Capacity	Min Order/ Case Pack	Natural (€)	Colour Coated (€)
CW4024	Straight-Sided Square Bowl, 12.5 x 12.5 x 7.5 cm	1 Litre	1 / 1	42.29 ea	55.08 ea
a. CW4004	Straight-Sided Square Bowl, 25.5 x 25.5 x 7.5 cm	4 Litre	1 / 1	106.32 ea	124.13 ea
CW4026	Straight-Sided Rectangular Bowl, 25.5 x 12.5 x 7.5 cm	2.25 Litre	1 / 1	61.22 ea	67.46 ea
b. CW4008	Straight-Sided Rectangular Bowl, 38 x 12.5 x 7.5 cm	3.5 Litre	1 / 1	84.58 ea	107.86 ea
c. CW4006	Straight-Sided Rectangular Bowl, 49.5 x 17 x 7.5 cm	6.5 Litre	1 / 1	119.21 ea	138.84 ea

PROFESSIONAL BAKEWARE

BY



a



c



b

DROP-IN PERFORATED STAINLESS STEEL NSF-7 TEMPLATE

Call your TableCraft sales representative for design layout to ensure proper fit for templates & bowls.

Item #	Description	Min Order/ Case Pack	List Price (€)
a. CW1012BRS	Full Size Perforated Template, 32.5 x 54 x 7.5 cm, 16GA Stainless Steel	1 / 1	209.52 ea
CW1014BRS	Double Size Perforated Template, 65.5 x 54 x 7.5 cm, 16GA Stainless Steel	1 / 1	419.06 ea



a

**BUFFET, CATERING
& DISPLAY**
PROFESSIONAL BAKEWARE CAST ALUMINIUM



AURORA COLLECTION™



The Cast Aluminium construction is virtually unbreakable. Optimal performance of cast design not only conducts temperature, but will never dent, thus, keeping your equipment running more efficiently.

- Made within standard pan sizes; no template required, meaning fewer restrictions and more savings
- Operator friendly Aurora Collection™ stores easily by nesting together
- Flat base surface works well with cooling plates and conducts optimal temperatures
- Use with universal adapter bars (Pg. 15)

CAST ALUMINIUM FOOD PAN

	Item #	Description	Capacity	Min Order/ Case Pack	Natural (€)	Colour Coated (€)
a.	CW4048	Full Pan Shallow, 52.5 x 32.5 x 4 cm	4 Litre	1 / 1	120.94 ea	154.63 ea
	CW4049	Full Pan, 52.5 x 32.5 x 6.5 cm	8 Litre	1 / 1	117.58 ea	150.60 ea
b.	CW4052	Half Pan, 32.5 x 26.5 x 6.5 cm	3 Litre	1 / 1	62.88 ea	80.54 ea
	CW4050	Full Pan Deep Divided, 52.5 x 32.5 x 10 cm	4.5 Litre	1 / 1	163.06 ea	208.61 ea
c.	CW4054	Half Long Pan, 52.5 x 16 x 10 cm	4 Litre	1 / 1	87.37 ea	111.96 ea
	CW4056	Third Pan, 32.5 x 17.5 x 10 cm	2.5 Litre	1 / 1	58.46 ea	74.90 ea
d.	CW4058	Sixth Pan, 17.5 x 16 x 15 cm	1 Litre	1 / 1	40.66 ea	52.34 ea

CAST ALUMINIUM RECTANGULAR PAN

	Item #	Description	Capacity	Min Order/ Case Pack	Natural (€)	Colour Coated (€)
	CW1796	Extra Small Pan with Lip, 12.5 x 18 x 5 cm	0.5 Litre	1 / 1	21.91 ea	28.20 ea
	CW1797	Small Pan with Lip, 15 x 20.5 x 7.5 cm	1 Litre	1 / 1	29.23 ea	37.85 ea
	CW1798	Medium Pan with Lip, 18.5 x 28.5 x 5 cm	1.5 Litre	1 / 1	43.63 ea	55.58 ea
e.	CW1799	Large Pan with Lip, 25.5 x 30.5 x 7.5 cm	3.5 Litre	1 / 1	62.88 ea	79.73 ea



AURORA COLLECTION™ WITH GRILL MARKS



PROFESSIONAL
BAKEWARE

BY



CAST ALUMINIUM GRILL PAN

	Item #	Description	Capacity	Min Order/ Case Pack	Natural (€)	Colour Coated (€)
a.	CW1240	Full Grill Pan, 52.5 x 32.5 x 4 cm	4 Litre	1 / 1	117.88 ea	151.40 ea
	CW1242	Half Grill Pan, 32.5 x 26.5 x 4 cm	1.5 Litre	1 / 1	62.18 ea	79.73 ea
b.	CW1244	Half Long Grill Pan, 52.5 x 16 x 4 cm	2 Litre	1 / 1	65.38 ea	83.76 ea



UNIVERSAL ADAPTER BARS



For use with Aurora Collection™ or other Cast Aluminium food pans. Stainless Steel steam table pan adapter bars divide your steam table to fit all types of pans. Gives your steam table a professional look without templates.

Item #	Description	Min Order/ Case Pack	List Price (€)
CWA12	Universal Adapter Bar, 33 cm	1 / 12	1.90 ea
CWA20	Universal Adapter Bar, 53 cm	1 / 12	2.81 ea



**BUFFET, CATERING
& DISPLAY**
PROFESSIONAL BAKEWARE CAST ALUMINIUM



PROFESSIONAL BAKEWARE

BY 

CAST ALUMINIUM FOOD PANS



Looks like porcelain but is break resistant. Maintains temperature.

Fits into standard wells. Must use universal adapter bar on page 15 with this product.

Item #	Description	Capacity	Min Order/ Case Pack	Natural (€)	Colour Coated (€)
a. CW300	Full Size Cast Aluminium Food Pan, 52.5 x 32.5 x 6.5 cm	7 Litre	1 / 1	88.70 ea	152.93 ea
b. CW310	Half Size Cast Aluminium Food Pan, 32.5 x 26 x 6.5 cm	4 Litre	1 / 1	68.47 ea	88.54 ea
c. CW330	Half Long Cast Aluminium Food Pan, 52.5 x 16 x 6.5 cm	3.5 Litre	1 / 1	39.77 ea	90.72 ea
d. CW340	Third Size Cast Aluminium Food Pan, 32.5 x 17.5 x 6.5 cm	1.5 Litre	1 / 1	56.38 ea	74.88 ea
e. CW320	Half Size Cast Aluminium Food Pan, 32.5 x 26 x 10 cm	5.5 Litre	1 / 1	68.47 ea	110.35 ea
f. CW350	Third Size Cast Aluminium Food Pan, 32.5 x 17.5 x 10 cm	2.5 Litre	1 / 1	63.22 ea	81.77 ea
g. CW360	Sixth Size Cast Aluminium Food Pan, 15.5 x 16 x 10 cm	1 Litre	1 / 1	45.10 ea	59.26 ea



COATED CAST ALUMINIUM COLOURS SEE PAGE 10 FOR DETAILS



COOLING PLATES AND DISPLAYS



SQUARE / RECTANGULAR PLATES - BRUSHED STAINLESS STEEL

For best results, freeze overnight and serve food with pre-chilled cast Aluminium bowls or cooling plate trays. Cooling plates will help to keep food chilled for 2-3 hours. Results may vary dependant on ambient room temperature. Cooling plates can be used seperately, with stands or on cooling base station.

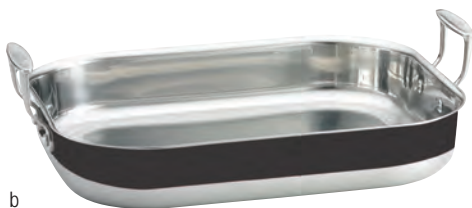
Item #	Description	Min Order/ Case Pack	Natural (€)	Colour Coated (€)
a. CW60101	Half Size S/S Cooling Plate, 32.5 x 26.5 x 4 cm	1 / 6	70.85 ea	
CW60103	Half Long Size S/S Cooling Plate, 53.5 x 17.5 x 4 cm	1 / 8	82.13 ea	
b. CW60100	Full Size S/S Cooling Plate, 53 x 32.5 x 4 cm	1 / 4	135.29 ea	

COOLING PLATE TRAY

c. CW2113	Half Long Rectangular Serving Tray, 53.5 x 16.5 x 1 cm	1 / 1	96.65 ea	99.38 ea
-----------	---	-------	----------	----------

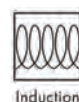


**BUFFET, CATERING
& DISPLAY**
COLD HOLDING SERVERS & DISPLAYS



NEW

COLOURED TRI-PLY COOKWARE



Safe for stove top, hot plate, gas, steam, induction and oven use. Tri-Ply design allows for even heat distribution along the interior of the cookware, eliminating hot spots.

Three layers:

- Stainless Steel 18-8 Interior
- Aluminium Core
- Stainless Steel 18-0 Exterior

Item	Description	Capacity	Min Order/Case Pack	List Price (€)
a.	CW2030* Roast Pan, 29 x 25 x 6.5 cm	4 Litre	1 / 6	129.22 ea
b.	CW2032* Roast Pan, 37 x 29.5 x 6.5 cm (Not Induction Ready)	7 Litre	1 / 4	170.74 ea
c.	CW7002* Sauce Pan, 17 x 17 x 10 cm	2 Litre	1 / 8	101.52 ea
d.	CW7004* Sauce Pan, 20 x 20 x 11.5 cm	3.5 Litre	1 / 8	115.39 ea
e.	CW7010* Braiser w/ 2 Handles, 25.5 x 25.5 x 6.5 cm	3.5 Litre	1 / 6	85.39 ea

Induction ready unless otherwise noted.

COLOURED TRI-PLY COLOURS



*BK



*R

TO ORDER:

CW2030 **BK**
ITEM NUMBER Colour

TRI-PLY COOKWARE



First-rate equipment for all cooking methods and a wide variety of your buffet line needs.

Perfect for hot holding and oven to buffet line serving. Tri-Ply design allows for even heat distribution along the bottom and side walls of the cookware, eliminating hot spots. Strong, ergonomic handles ensure easy handling. Heavy duty Stainless Steel.

Three layers:

- Stainless Steel 18-8 interior
- Aluminium Core
- Stainless Steel 18-0 exterior

Safe for stove top, hot plate, gas, steam, induction and oven use.

Item #	Description	Capacity	Min Order/ Case Pack	List Price (€)
a. CW7016	20.5 cm dia Fry Pan w/ handle	1.5 Litre	1 / 8	38.64 ea
b. CW7018	25.5 cm dia Fry Pan w/ handle	2.5 Litre	1 / 6	57.96 ea
c. CW7010	Braiser w/ 2 handles, 25.5 x 25.5 x 6.5 cm	3.5 Litre	1 / 6	59.59 ea
d. CW7012	Wok with 2 Handles, 24 x 24 x 7.5 cm	3.5 Litre	1 / 6	57.96 ea
e. CW7020	Grill Pan w/ Long & Helper Handle, 28 x 28 x 4.5 cm	3.5 Litre	1 / 4	80.52 ea
f. CW7014	Wok w/ Long & Helper Handle, 30 x 30 x 8.5 cm	5.5 Litre	1 / 4	90.19 ea
REPLACEMENT PARTS & ACCESSORIES				
g. CW7008L	Lid for CW7010 & CW7012, 24 cm dia	—	1 / 10	19.32 ea
	CW7014L Lid for CW7014, 16.5 cm dia	—	1 / 10	41.88 ea

PROFESSIONAL BAKEWARE

BY



a



b



c



d



e



f

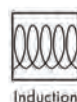


g

**BUFFET, CATERING
& DISPLAY**
HOT SERVING AND COOKWARE



TRI-PLY COOKWARE CONTINUED



a



b



c



d



e

Item #	Description	Capacity	Min Order/ Case Pack	List Price (€)
CW2042	Oval Pan w/ 2 handles, 9 x 12 x 6.5 cm	4.5 Litre	1 / 6	85.34 ea
a. CW2044	Oval Pan w/ 2 Handles, 10 x 16 x 6.5 cm	6 Litre	1 / 4	106.29 ea
b. CW2030	Roast Pan w/ 2 handles, 12 x 10 x 6.5 cm	4 Litre	1 / 6	90.19 ea
c. CW2032	Roast Pan w/ 2 Handles, 27 x 30 cm (Not Induction Ready)	7 Litre	1 / 4	119.18 ea
d. CW2034	French Oven with 2 Handles, 42 x 34.5 x 9 cm (Not Induction Ready)	12.5 Litre	1 / 2	151.39 ea
e. CW2034L	French Oven Lid, Fits CW2034, 42 x 34.5 x 9 cm	—	1 / 4	69.24 ea

Induction ready unless otherwise noted.



TRI-PLY
COOKWARE CONTINUED



• Lid Included

Item	Description	Capacity	Min Order/ Case Pack	List Price (€)
CW7000	Sauce Pan w/ 2 Handles, 16 x 16 x 6.5 cm	1 Litre	1 / 10	33.05 ea
REPLACEMENT PARTS & ACCESSORIES				
CW7000L	Lid for CW7000, 16 cm dia	—	1 / 20	13.70 ea



LID HOOK



Conveniently and safely stores your lid during service.

• 18-8 Stainless Steel

Item #	Description	Min Order/ Case Pack	List Price
CWLH3632	Stainless Steel Lid Hook, (6 per pack) 10 x 7.5 x 8.5 cm	1 / 6	16.10 pk



BUFFET, CATERING
& DISPLAY
HOT SERVING AND COOKWARE



a



b

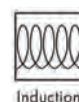


c



d

DIE CAST COOKWARE



Induction Ready Cookware pieces. Die Cast Aluminium. High temperature exterior coating. Non-stick interior coating. Cast handles. Safe for stove top, hot plate, gas, induction and oven use.

Item #	Description	Capacity	Min Order/Case Pack	List Price (€)
a. CWDC1030	Die Cast Sauce Pan with Lid, 25.5 x 25.5 x 11.5 cm	5.5 Litre	1 / 1	46.22 ea
CWDC1020	Die Cast Sauce Pan with Lid, 20.5 x 20.5 x 10 cm	3.5 Litre	1 / 1	41.21 ea
b. CWDC1070	Die Cast Grill Pan, 45.5 x 28 cm	–	1 / 1	59.04 ea
c. CWDC1040	Die Cast Wok with Lid, 33 x 33 x 7.5 cm	3.5 Litre	1 / 1	61.44 ea
d. CWDC1050	Die Cast Casserole with Lid, 25.5 x 25.5 x 7.5 cm	3.5 Litre	1 / 1	39.19 ea
CWDC1060	Die Cast Casserole with Lid, 28 x 28 x 7.5 cm	4.5 Litre	1 / 1	44.47 ea

PIZZA PANS



Cast Aluminium pizza pans are a great solution for oven to buffet line serving; a perfect hot holding solution for an extended period of time.

Item #	Description	Min Order/Case Pack	Natural (€)	Colour Coated (€)
a. CW4140	18 cm dia Pizza Pan with Handle	1 / 1	30.60 ea	59.40 ea
CW4100	40.5 cm dia Pizza Pan with Handle	1 / 1	75.70 ea	142.80 ea



a



COATED CAST ALUMINIUM COLOURS SEE PAGE 10 FOR DETAILS



CAST IRON COOKWARE



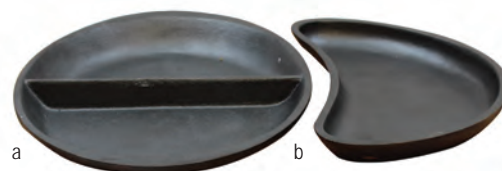
Detailed care and use instructions listed on Cash and Carry packaging.

PROFESSIONAL BAKEWARE

BY



Item #	Description	Capacity	Min Order/ Case Pack	List Price (€)
a.	CW30126 Divided Oval Server, 26 x 18.5 x 2.5 cm	(2) 235 ml	1 / 6	11.09 ea
b.	CW30128 Crescent Server, 21.5 x 13 x 2.5 cm	235 ml	1 / 6	5.64 ea
c.	CW30152 Fajita Platter, 20.5 cm dia (26 cm w/ handles) x 4.5 cm	710 ml	1 / 6	10.78 ea
d.	CW30114 Square Fry Pan, 25 cm L (32.5 cm w/ handles) x 25 cm W x 4.5 cm	2.5 Litre	1 / 1	23.62 ea
	CW30130 Cast Iron Round Skillet, 21 cm dia (37 cm x 23 x 6.5 cm)	1.5 Litre	1 / 6	17.94 ea
e.	CW30132 Cast Iron Round Skillet, 26 cm dia (44.5 x 28 x 6.5 cm)	2.5 Litre	1 / 4	27.60 ea
	CW30134 Cast Iron Round Skillet, 31 cm dia (49.5 x 33 x 6.5 cm)	3.5 Litre	1 / 4	37.36 ea
f.	CW30120 Square Fry Pan w/ Grill, 25 cm L (41.5 cm w/ handles) x 25.5 cm W x 4.5 cm	2.5 Litre	1 / 1	25.92 ea
g.	CW30116 Wok, 35.5 dia (44.5 cm w/ handles) x 10 cm	6.5 Litre	1 / 1	55.58 ea
h.	CW30118 Pizza Pan, 32.5 cm dia (45.5 cm w/ handles) x 4.5 cm	—	1 / 1	38.45 ea



**BUFFET, CATERING
& DISPLAY**
HOT SERVING AND COOKWARE

QUICK VIEW INDUCTION CHAFING SERVERS

Slow-closing lid keeps your food presentation attractive while reducing noise.
 Polished Stainless Steel to withstand daily use & easy cleaning. Includes steam pan and water basin. Steam vent to reduce condensation. Viewing window to easily see content.

Item	Description	Capacity	Min Order/ Case Pack	List Price (€)
a. CW40165	Round Induction Server With Window, 44 x 49 x 20 cm (Fits CW40177STAND)	4.5 Litre	1 / 1	381.65 ea
b. CW40161	Full Size Induction Server With Window, 58 x 44 x 21 cm (Fits CW40175STAND)	8 Litre	1 / 1	478.27 ea
c. CW40163	¾ Size Induction Server With Window, 40.5 x 42.5 x 21 cm (Fits CW40176STAND)	5.5 Litre	1 / 1	399.36 ea



a



b



c

UNIQUE FEATURES INCLUDE:



a. Slow closing lid with improved hinge design



b. Improved hinge design has an integrated stop to keep lid open for serving



c. Hinge is easier to replace (no tools needed)



d. New Steam Pan Lifter protects operator from steam burns, making food rotation easier



e. Intuitive integrated lip to assist in manually removing steam pans



f. Smaller window with rubber gasket holds temperature better, longer



g. Improved induction base integrated into design



h. Integrated spoon rest for seamless serving, keeping your buffet more sanitary



PROFESSIONAL BAKEWARE

BY 

QUICK VIEW FUEL CHAFING DISHES

Quick-View Chafing Dishes with glass window allow guests to view contents without lifting lid, keeping contents hotter, longer. Versatile design allows for multiple heating options. Use with chafing fuel or with an Induction Range.

- Stainless Steel polished exterior adds elegance to any buffet line
- Improved design increases hot holding while making it more operator friendly

Item	Description	Capacity	Min Order/ Case Pack	List Price (€)
a. CW40175	Full Size Fuel Server w/ Window & Stand, 58 x 45.5 x 33 cm	8 Litre	1 / 1	563.62 ea
b. CW40176	¾ Size Fuel Server w/ Window & Stand, 40.5 x 44 x 32.5 cm	5.5 Litre	1 / 1	486.38 ea
c. CW40177	Round Fuel Server w/ Window & Stand, 44 x 49.5 x 31 cm	4.5 Litre	1 / 1	412.26 ea



a



b



c

**BUFFET, CATERING
& DISPLAY**
CHAFERS & SERVERS



PROFESSIONAL
BAKEWARE
BY
TABLECRAFT

ROLL TOP FUEL CHAFING DISHES

Slow-closing lid keeps your food presentation attractive while reducing noise. Polished Stainless Steel to withstand daily use & easy cleaning. Fuel holder to distribute heat evenly. Includes food pan and water basin. Steam vent to reduce condensation.

Item	Description	Capacity	Min Order/ Case Pack	List Price (€)
a.	CW40167 Full Size Fuel Server Roll Top, 63.5 x 43 x 43 cm	8 Litre	1 / 1	262.54 ea
b.	CW40168 34.5 cm dia Round Fuel Server Roll Top	7 Litre	1 / 1	252.84 ea



a

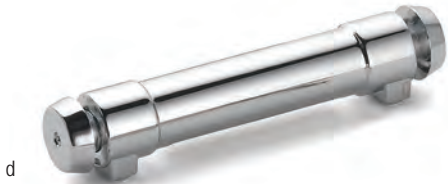


b



CHAFING DISH ACCESSORIES

Item	Description	Capacity	Min Order/ Case Pack	List Price (€)
a.	CW40297 Round Stainless Steel Divided Food Pan, 38 x 38 x 6.5 cm (Fits CW40168)	2.5 Litre	1 / 1	95.83 ea
b.	CW40141 (2) 1/3 Size Stainless Steel Divided Food Pan, 32 x 35.5 x 6.5 cm (Fits CW40167)	6.5 Litre	1 / 1	31.40 ea
c.	CW40142 Round Standard Steam Pan, 38.5 x 38.5 x 6.5 cm (Fits CW40168)	4 Litre	1 / 1	35.42 ea
d.	CW10144 Replacement Hinge for Chafer Lid (Fits CW40167 & CW40168)	-	1 / 1	101.44 ea





SIERRA MELAMINE COLLECTION™



The simple and stylish design of the Sierra Melamine Collection™ complements any buffet or catered event. The slanted design brings both beauty and elegance to your setting. Available in a variety of shapes and sizes to fit every display need. Constructed of durable, break resistant melamine for years of dependable use.

• Not Microwave or Oven Safe

Item	Description	Capacity	Min Order/Case Pack	List Price (€)
------	-------------	----------	---------------------	----------------

ROUND BOWLS

	M4088WH	Round Small Bowl, 20.5 x 20.5 x 10 cm	1.5 Litre	1 / 6	10.46 ea
a.	M4090WH	Round Medium Bowl, 24.5 x 24.5 x 12.5 cm	2 Litre	1 / 3	16.92 ea
b.	M4092WH	Round Large Bowl, 32 x 32 x 14 cm	4 Litre	1 / 3	24.96 ea
	M4094WH	Round Extra Large Bowl, 34.5 x 34.5 x 14 cm	4.5 Litre	1 / 3	28.20 ea

OVAL BOWLS

c.	M4084WH	Oval Medium Bowl, 33.5 x 19 x 10 cm	1.5 Litre	1 / 3	20.14 ea
d.	M4086WH	Oval Large Bowl, 43 x 23.5 x 13.5 cm	4 Litre	1 / 3	27.38 ea

Item	Description	Capacity	Min Order/Case Pack	List Price (€)
------	-------------	----------	---------------------	----------------

SQUARE BOWLS

	M4066WH	Square Flared Bowl, 29.5 x 29.5 x 7 cm	1.5 Litre	1 / 3	22.54 ea
	M4068WH	Square Flared Large Bowl, 38.5 x 38.5 x 10.5 cm	4.5 Litre	1 / 2	44.30 ea
e.	M4070WH	Square Flared Extra Large Bowl, 50 x 50 x 10.5 cm	6 Litre	1 / 2	67.63 ea

RECTANGULAR BOWLS

	M4076WH	Rectangular Large Bowl, 52.5 x 23.5 x 10 cm	3 Litre	1 / 2	41.86 ea
f.	M4078WH	Rectangular Extra Large Bowl, 66.5 x 32 x 12 cm	7.5 Litre	1 / 2	70.85 ea

a

b

c

d

e

f



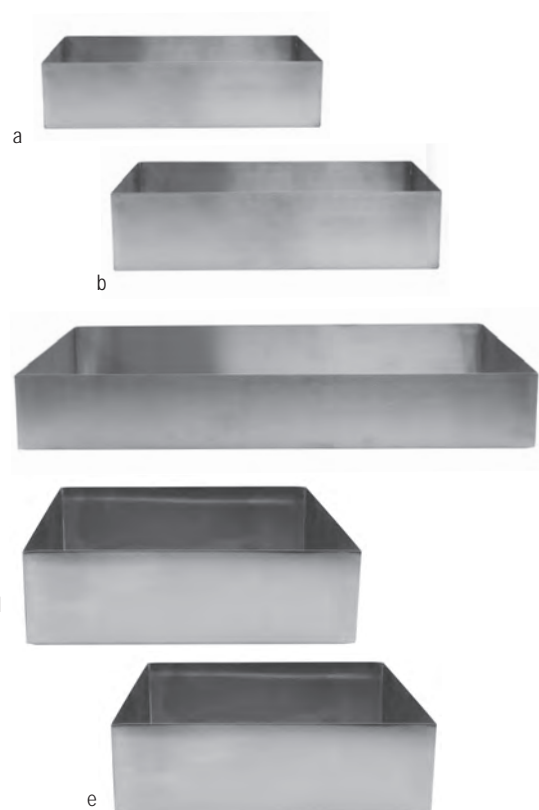


STAINLESS STEEL STRAIGHT-SIDED BOWLS



Perfect for deli cases, buffet lines and salad bars. Straight-Sided Bowl design saves valuable display space and features a durable 18-8 Stainless Steel construction. Brushed finish, rust resistant. Versatile design can be flipped to create an elegant, clean riser display.

	Item	Description	Capacity	Min Order/ Case Pack	List Price(€)
a.	SS4026	Straight-Sided Bowl, 18-8 , 25.5 x 12.5 x 7.5 cm	2 Litre	1 / 8	29.48 ea
b.	SS4027	Straight-Sided Bowl, 18-8 , 30.5 x 15 x 7.5 cm	4 Litre	1 / 8	38.70 ea
c.	SS4033	Straight-Sided Bowl, 18-8 , 50.5 x 15.5 x 7.5 cm	13.5 Litre	1 / 6	77.86 ea
	SS4017	Straight-Sided Bowl, 18-8 , 50.5 x 15.5 x 7.5 cm	7 Litre	1 / 8	53.90 ea
d.	SS4005	Straight-Sided Bowl, 18-8 , 30.5 x 25.5 x 7.5 cm	7 Litre	1 / 8	47.90 ea
e.	SS4004	Straight-Sided Bowl, 18-8 , 25.5 x 25.5 x 7.5 cm	5.5 Litre	1 / 8	42.86 ea
f.	SS4007	Straight-Sided Bowl, 18-8 , 38 x 12.5 x 3.5 cm	2 Litre	1 / 8	25.36 ea
g.	SS4008	Straight-Sided Bowl, 18-8 , 38 x 12.5 x 7.5 cm	4 Litre	1 / 8	39.08 ea
h.	SS4014	Straight-Sided Bowl, 18-8 , 25.5 x 25.5 x 3.5 cm	2 Litre	1 / 8	29.30 ea
i.	SS4024	Straight-Sided Bowl, 18-8 , 12.5 x 12.5 x 7.5 cm	1.5 Litre	1 / 8	20.94 ea
	SS4025	Straight-Sided Bowl, 18-8 , 15 x 15 x 7.5 cm	2 Litre	1 / 8	24.64 ea



PROFESSIONAL
BAKEWARE
BY
TABLECRAFT

**BUFFET, CATERING
& DISPLAY**
BUFFET COLLECTIONS



CONTEMPORARY MELAMINE COLLECTION™

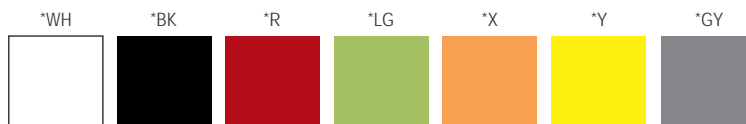
Contemporary Melamine Straight-Sided Bowls are available in a variety of sizes for attractive presentation while offering a space saving design.

• Not Microwave Safe or Oven Safe



STANDARD STRAIGHT-SIDED BOWLS

Item	Description	Capacity	Min Order/Case Pack	List Price (€)
a. M4024*	Straight-Sided Bowl, 12.5 x 12.5 x 7.5 cm	1 Litre	1 / 12	14.66 ea
b. M4026*	Straight-Sided Bowl, 23.5 x 12.5 x 7.5 cm	1.5 Litre	1 / 6	19.32 ea
c. M4014*	Straight-Sided Bowl, 25.5 x 25.5 x 4 cm	2 Litre	1 / 6	21.74 ea
d. M4008*	Straight-Sided Bowl, 38 x 12.5 x 7.5 cm	3 Litre	1 / 12	27.38 ea
e. M4004*	Straight-Sided Bowl, 25.5 x 25.5 x 7.5 cm	4 Litre	1 / 6	29.81 ea
M4007*	Straight-Sided Bowl, 38 x 12.5 x 4 cm	1.5 Litre	1 / 12	17.71 ea



Six colour options are available for the Contemporary Melamine Collection. When ordering, add the colour code () to the end of the item number.

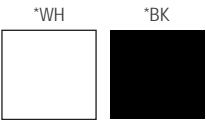
TO ORDER:

M4024 LG
ITEM NUMBER COLOUR



DELI-CASE STRAIGHT-SIDED BOWLS

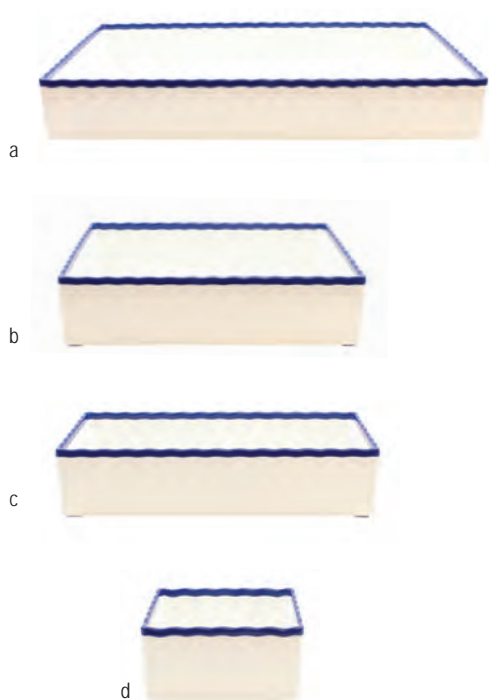
Item	Description	Capacity	Min Order/ Case Pack	List Price (€)
a. M4025*	Straight-Sided Bowl, Melamine, 15 x 15 x 7.5 cm	1 Litre	1 / 12	16.25 ea
b. M4027*	Straight-Sided Bowl, Melamine, 30.5 x 15 x 7.5 cm	3 Litre	1 / 6	22.53 ea
c. M4005*	Straight-Sided Bowl, Melamine, 30.5 x 25.5 x 7.5 cm	4.5 Litre	1 / 6	31.40 ea
d. M4017*	Straight-Sided Bowl, Melamine, 51 x 15 x 7.5 cm	4.5 Litre	1 / 4	31.40 ea
M4033*	Straight-Sided Bowl, Melamine, 51 x 30.5 x 7.5 cm	10 Litre	1 / 4	39.44 ea



Two colour options are available for the deli-case straight-sided bowls. When ordering, add the colour code () to the end of the item number.

TO ORDER:
M4005 **WH**
ITEM NUMBER COLOUR





GASTRONORM DELI PANS

• Not microwave or oven safe



MELAMINE, SILICONE NON-SLIP FEET

Item	Description	Capacity	Min Order/ Case Pack	List Price (€)
a. M11765BL	Full Size Straight-Sided Gastronorm Pan, White with Blue Trim, 53.5 x 33 x 7.5 cm	13 Litre	1 / 2	95.76 ea
b. M12765BL	Half Size Straight-Sided Gastronorm Pan, White with Blue Trim, 32.5 x 26.5 x 7.5 cm	6.5 Litre	1 / 3	49.08 ea
c. M13765BL	1:3 Size Straight-Sided Gastronorm Pan, White with Blue Trim, 32.5 x 17.5 x 7.5 cm	4 Litre	1 / 3	39.72 ea
d. M16765BL	1:6 Size Straight-Sided Gastronorm Pan, White with Blue Trim, 17.5 x 16.5 x 7.5 cm	1.5 Litre	1 / 4	23.88 ea

GASTRONORM PANS



Durable, break resistant melamine is a lightweight alternative to the porcelain gastronorm pans.

- Safe for temperatures up to 212°F / 100°C
- Dishwasher safe
- Not microwave or oven safe

MELAMINE

Item	Description	Min Order/ Case Pack	List Price (€)
a. MG2420BK	2/4 Tray, 20mm Deep, Black	1 / 32	16.75 ea
MG2420W	2/4 Tray, 20mm Deep, White	1 / 32	16.75 ea
MG1120BK	1/1 Tray, 20mm Deep, Black	1 / 16	32.28 ea
b. MG1120W	1/1 Tray, 20mm Deep, White	1 / 16	32.38 ea
c. MG1165BK	1/1 Pan, 65mm Deep, Black	1 / 16	43.95 ea
MG1165W	1/1 Pan, 65mm Deep, White	1 / 16	43.95 ea
MG11100BK	1/1 Tray, 100mm Deep, Black	1 / 7	48.89 ea
d. MG11100R	1/1 Tray, 100mm Deep, Red	1 / 7	48.89 ea
MG11100W	1/1 Tray, 100mm Deep, White	1 / 7	48.89 ea
MG1265BK	1/2 Pan, 65mm Deep, Black	1 / 16	25.15 ea
e. MG1265W	1/2 Pan, 65mm Deep, White	1 / 16	25.15 ea
MG12100BK	1/2 Tray, 100mm Deep, Black	1 / 14	30.02 ea
f. MG12100R	1/2 Tray, 100mm Deep, Red	1 / 14	30.02 ea
MG12100W	1/2 Tray, 100mm Deep, White	1 / 14	30.02 ea
g. MG1365BK	1/3 Pan, 65mm Deep, Black	1 / 24	22.58 ea
MG1365W	1/3 Pan, 65mm Deep, White	1 / 24	22.58 ea
MG13100BK	1/3 Pan, 100mm Deep, Black	1 / 12	25.08 ea
MG13100R	1/3 Pan, 100mm Deep, Red	1 / 21	25.08 ea
MG13100W	1/3 Pan, 100mm Deep, White	1 / 12	25.08 ea
h. MG1465BK	1/4 Pan, 65mm Deep, Black	1 / 32	19.34 ea
i. MG1465W	1/4 Pan, 65mm Deep, White	1 / 32	19.34 ea



a



b



c



d



e



f



h



i



g

**BUFFET, CATERING
& DISPLAY**
BUFFET COLLECTIONS



FROSTONE ACACIA COLLECTION™



Freshen up your buffet line with TableCraft's new Frostone Acacia Collection™. Acacia pattern combines the attractive, natural appearance of wood with the durable qualities of melamine. Collection includes a variety of sizes to suit any of your serving needs.

- Durable, lightweight melamine
- Not microwave or oven safe

MELAMINE, ACACIA WOOD

Item	Description	Min Order/ Case Pack	List Price (€)
BOWLS			
MB94ACA	Square Bowl, Acacia Wood, 25.5 x 25.5 x 10 cm	1 / 3	24.38 ea
a. MB125ACA	Square Bowl, Acacia Wood, 31 x 31 x 12.5 cm	1 / 3	36.00 ea
MB166ACA	Square Bowl, Acacia Wood, 40 x 40 x 15 cm	1 / 3	52.01 ea
TRAYS			
M1414ACA	Square Tray, Acacia Wood, 35.5 cm	1 / 3	27.50 ea
b. M1717ACA	Square Tray, Acacia Wood, 42 cm	1 / 3	36.70 ea
M1919ACA	Square Tray, Acacia Wood, 47.5 cm	1 / 3	46.66 ea
DISPLAY PADDLES			
c. MP13ACA	Round Display Paddle, Acacia Wood 33 x 46.5 x 1.5 cm	1 / 4	29.02 ea
d. MP20ACA	Rectangular Display Paddle, Acacia Wood 51 x 19.5 x 2.5 cm	1 / 4	27.26 ea

a

b

c

d



NEW

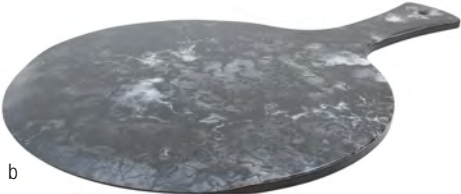
FROSTONE NATURALS



Create a naturally attractive display with our new Frostone Naturals Collection featuring a selection of serving bowls and paddles. Melamine bowls feature cut-out handles to effortlessly serve pastas, salads and more with earthy elegance. Paddles include handles and non-slip feet to conveniently keep your serving pieces in place on the buffet or serving line. Available in three finishes: Black or Tuscan Marble to offer a classic, upscale serving presentation or Garland Granite to add a unique pop of colour.

- Durable, lightweight melamine
- Not microwave or oven safe

Item	Description	Min Order/ Case Pack	List Price (€)
MELAMINE, BLACK MARBLE			
a. MBM145BM	Bowl, 3.5 Litre, 38 x 33 x 12.5 cm	1 / 3	25.64 ea
b. MP13BM	Round Display Paddle, 46.5 x 33 dia x 1.5 cm	1 / 4	18.42 ea
MP20BM	Display Paddle, 50.5 x 19 x 2 cm	1 / 4	17.24 ea
MELAMINE, TUSCAN MARBLE			
c. MBM145TM	Bowl, 3.5 Litre, 38 x 33 x 12.5 cm	1 / 3	27.74 ea
MP13TM	Round Display Paddle, 46.5 x 33 dia x 1.5 cm	1 / 4	21.22 ea
d. MP20TM	Display Paddle, 50.5 x 19 x 2 cm	1 / 4	20.46 ea
MELAMINE, GARLAND GRANITE			
e. MBM145GT	Bowl, 3.5 Litre, 38 x 33 x 12.5 cm	1 / 3	27.74 ea
f. MP13GT	Round Display Paddle, 46.5 x 33 dia x 1.5 cm	1 / 4	21.22 ea
MP20GT	Display Paddle, 50.5 x 19 x 2 cm	1 / 4	20.46 ea



**BUFFET, CATERING
& DISPLAY**
BUFFET COLLECTIONS



FROSTONE SLATE COLLECTION™



Display with the elegance of slate and the lightweight quality of melamine. Our Frostone Collection™ has the distinguished look of slate or porcelain but is made of durable and break resistant melamine. The Frostone Collection™ matches its durability with style; mix and match any size trays, bowls and sauce dishes to make this line the perfect collection to spice up any buffet or tabletop setting. Unique shapes and textures.

- Durable, lightweight melamine
- Not microwave or oven safe

TEXTURED FINISH, RECTANGULAR MELAMINE, BLACK



a



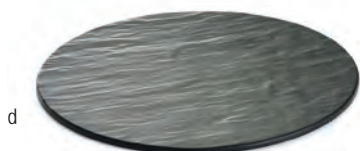
b

Item	Description	Min Order/ Case Pack	List Price (€)
a. MG1	Rectangular Display Tray, 52.5 x 32.5 cm	1 / 3	46.37 ea
MG2	Rectangular Display Tray, 32.5 x 26.5 cm	1 / 3	24.00 ea
b. MG3	Rectangular Display Tray, 32.5 x 17.5 cm	1 / 6	15.84 ea
c. MGL2	Rectangular Display Tray, 52.5 x 16 cm	1 / 3	24.00 ea



c

TEXTURED FINISH, ROUND MELAMINE, BLACK



d

Item	Description	Min Order/ Case Pack	List Price (€)
d. MG13	Round Display Tray, 33 cm dia	1 / 4	15.84 ea
MG16	Round Display Tray, 40.5 cm dia	1 / 4	19.10 ea



FROSTONE SLATE COLLECTION™ DISPLAYS



Coordinate with existing Frostone Slate pieces with Frostone Slate raised displays. These unique displays allow you to add dimension to your buffet line.

- Durable, lightweight melamine
- Not microwave or oven safe

TEXTURED FINISH, MELAMINE, BLACK

	Item	Description	Min Order/ Case Pack	List Price (€)
a.	MGD2112	Rectangular Melamine Display, 53.5 x 32.5 x 3 cm	1 / 3	27.06 ea
b.	MGD1616	Square Melamine Display, 42 x 42 x 3 cm	1 / 3	27.38 ea
c.	MGD16	Round Melamine Display, 41.5 x 41.5 x 1 cm	1 / 4	21.74 ea



FROSTONE COLLECTION™



Frostone Slate Collection is now available in white marble to provide an upscale look to your buffet or gray distressed wood for a rustic setting.

- Durable, lightweight melamine
- Not microwave or oven safe

TEXTURED FINISH, RECTANGULAR & ROUND MELAMINE, WHITE

	Item	Description	Min Order/ Case Pack	List Price (€)
MELAMINE, WHITE MARBLE				
a.	MG1WM	Rectangular Display Tray, 53 x 32.5 cm	1 / 3	37.06 ea
	MG2WM	Rectangular Display Tray, 32.5 x 27 cm	1 / 3	22.87 ea
	MG3WM	Rectangular Display Tray, 32.5 x 17.5 cm	1 / 6	15.80 ea
	MGL2WM	Rectangular Display Tray, 53 x 17 cm	1 / 3	21.60 ea
	MG13WM	Round Display Tray, 33 cm dia	1 / 4	21.91 ea
	MG16WM	Round Display Tray, 40.5 cm dia	1 / 4	31.25 ea
MELAMINE, DISTRESSED WOOD				
b.	MG1DW	Rectangular Display Tray, 53 x 32.5 cm	1 / 3	37.06 ea
	MG2DW	Rectangular Display Tray, 32.5 x 27 cm	1 / 3	22.87 ea
	MG3DW	Rectangular Display Tray, 32.5 x 17.5 cm	1 / 6	15.80 ea
	MGL2DW	Rectangular Display Tray, 53 x 17 cm	1 / 3	21.60 ea
	MG13DW	Round Display Tray, 33 cm dia	1 / 4	21.91 ea
	MG16DW	Round Display Tray, 40.5 cm dia	1 / 4	31.25 ea



*For more display options
see page 50*

**BUFFET, CATERING
& DISPLAY**
BUFFET COLLECTIONS



a



b



c



d



e

FROSTONE COLLECTION™



Create an elegant buffet or salad bar display. Melamine designs provide an attractive, lightweight display option.

- Durable, lightweight melamine
- Not microwave or oven safe

SMOOTH FINISH, MELAMINE BOWLS, WHITE



	Item	Description	Min Order/Case Pack	List Price (€)
a.	WB7	Wavy Melamine Bowl, 18.5 x 18.5 x 8.5 cm	1 / 6	6.29 ea
	WB9	Wavy Melamine Bowl, 23 x 23 x 9 cm	1 / 3	9.50 ea
b.	WB13	Wavy Melamine Bowl, 32.5 x 32.5 x 16.5 cm	1 / 3	19.01 ea
	WB16	Wavy Melamine Bowl, 40.5 x 40.5 x 17.5 cm	1 / 3	26.43 ea

SMOOTH FINISH, SLANTED BOWLS, WHITE



	Item	Description	Min Order/Case Pack	List Price (€)
	MBS6	Round Slanted Bowl with Base, 17.5 x 17 x 13.5 cm	1 / 6	19.18 ea
c.	MBS75	Round Slanted Bowl with Base, 20.5 x 20 x 15 cm	1 / 3	27.38 ea

SMOOTH FINISH, SQUARE BOWL, WHITE

	Item	Description	Capacity	Min Order/Case Pack	List Price (€)
	MB125	Square Bowl, White, 31 x 31 x 12.5 cm	7.5 Litre	1 / 3	32.88 ea
d.	MB166	Square Bowl, White, 40 x 40 x 15 cm	15 Litre	1 / 3	47.52 ea
e.	MB104	Square Bowl, White, 25.5 x 25.5 x 9 cm	3 Litre	1 / 3	16.20 ea
	MBT126	Sloped Round Bowl, White, 35.5 x 31.5 x 14 cm	2.5 Litre	1 / 3	29.18 ea

FROSTONE COLLECTION™

Unique shapes and textures.

- Durable, lightweight melamine
- Not microwave or oven safe



TEXTURED FINISH, RECTANGULAR MELAMINE, WHITE

	Item	Description	Min Order/ Case Pack	List Price (€)
a.	M165	Rectangular Display Tray, 40 x 12.5 cm	1 / 3	11.16 ea
	M186	Rectangular Display Tray, 45 x 14 cm	1 / 3	13.75 ea
	M2010	Rectangular Display Tray, 49.5 x 26.5 cm	1 / 3	35.21 ea
b.	M206	Rectangular Display Tray, 51 x 15.5 cm	1 / 3	20.59 ea
c.	M2511	Rectangular Display Tray, 62 x 26.5 cm	1 / 3	38.64 ea
	M2811	Rectangular Display Tray, 70 x 26.5 cm	1 / 3	43.75 ea

SMOOTH FINISH, SQUARE & RECTANGULAR MELAMINE

	Item	Description	Min Order/ Case Pack	List Price (€)
d.	M1414	Square Tray, White, 35 cm	1 / 3	28.34 ea
	BKM1414	Square Tray, Black, 35 cm	1 / 3	28.34 ea
	M1717	Square Tray, White, 42.5 cm	1 / 3	37.78 ea
e.	M1919	Square Tray, White, 47.5 cm	1 / 3	48.05 ea
	M2213	Rectangular Tray, White, 55 x 32 cm	1 / 3	39.50 ea

PEBBLED FINISH, MELAMINE

	Item	Description	Min Order/ Case Pack	List Price (€)
f.	M14	Round Pebbled Pattern Tray, White, 35.5 cm dia	1 / 3	23.23 ea
	BKM14	Round Pebbled Pattern Tray, Black, 35.5 cm dia	1 / 3	23.23 ea
	M18	Round Pebbled Pattern Tray, White, 45.5 x 45.5 x 5 cm	1 / 3	39.50 ea
	M22	Round Pebbled Pattern Tray, White, 56 cm dia	1 / 3	50.64 ea
	M1612	Oval Pebbled Pattern Tray, White, 40.5 x 30.5 x 3 cm	1 / 3	23.16 ea
g.	M2015	Oval Pebbled Pattern Tray, White 51 x 38 cm	1 / 3	38.64 ea
	MPD21	Round Tray, White, 47 cm dia (Fits Cover PC2 on p. 92)	1 / 6	51.46 ea
h.	MPD2415	Rectangular Tray, White 52.5 x 32.5 x 4.5 cm (Fits Cover PC1 on p. 54)	1 / 6	53.88 ea



**BUFFET, CATERING
& DISPLAY**
BUFFET COLLECTIONS



FRUIT BASKETS



Saves space while keeping your fruit organised on the buffet line or countertop.

CHROME PLATED/BLACK POWDER COATED METAL

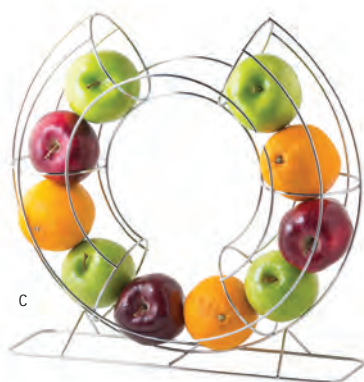
Item	Description	Min Order/ Case Pack	List Price (€)
a. 12SR	Fruit/Banana Combo Basket, Chrome Plated, 30.5 x 30.5 x 45.5 cm	1 / 8	26.52 ea
b. *FTB3	Three-Tier Fruit Basket, 30.5 x 30.5 x 42 cm	1 / 1	31.66 ea
c. FO1515	Circular Fruit Basket "O", 39 x 38 x 10 cm	1 / 6	31.49 ea
FSL1508	Sloped Fruit Basket, 19 x 25 x 44.5 cm	1 / 8	27.43 ea
d. FC1649	Curved Fruit Basket, 36 x 16 x 43 cm	1 / 12	32.59 ea
e. FSP1507	Spiral Fruit Basket, 20 cm dia x 47.5 cm	1 / 6	27.10 ea
f. *FSP1206	12" Spiral Fruit Basket, Chrome Plated, 17 cm dia x 32 cm	1 / 12	18.31 ea



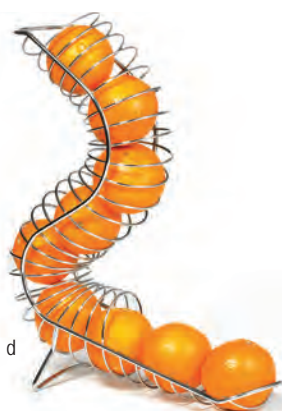
a



b



c



d



e



f



BASKET STAND SETS



Elevate your buffet with TableCraft's selection of Basket Stand Sets. Durable, polypropylene cord baskets for years of dependable use. Black, coated metal racks to match any décor. Choose from five sets with two or three-tiered levels, with coordinating rectangular or round baskets.

- Racks : wipe with damp cloth
- Baskets : hand wash only

BLACK POWDER COATED METAL & POLYPROPYLENE

Item	Description	Min Order/ Case Pack	List Price (€)
a. MBK1	Basket Stand Set, Includes Stand & 2 Rectangular, Angled Baskets (M1100W & M1101W), 33 x 36 x 50 cm	1/1	52.51 ea
b. MBK2	Basket Stand Set, Includes Stand & 3 Rectangular Baskets (M1102W), 69 x 46.5 x 54 cm	1/1	87.31 ea
c. MBK3	Basket Stand Set, Includes Stand & 2 Rectangular Baskets (M1103W), 55 x 42 x 45 cm	1/1	58.03 ea
MBK4	Basket Stand Set, Includes Stand & 2 Round, Angled Baskets (M1104W), 70 x 36 x 34 cm	1/1	52.51 ea
d. MBK5	Basket Stand Set, Includes Stand & 3 Round Baskets (M1105W), 83 x 40 x 54 cm	1/1	74.74 ea



a



b



d



c

**BUFFET, CATERING
& DISPLAY**
RISERS & DISPLAYS



TRANSFORMATION OPTIONS



Flat



Raised up 2 levels



Angled up 1 level



Angled up 2 levels



Angle horizontally or vertically

GRAND MASTER TRANSFORMER® COLLECTION



The contemporary black metal wire baskets in our exclusive Grand Master Transformer® Collection provide trendsetting versatility for any application. With a variety of unique shapes and sizes, the uses for these baskets are limited only by the scope of your imagination. Adjusts to different heights and angles. Melamine inserts are dishwasher safe; not microwave or oven safe.

BLACK POWDER COATED METAL & MELAMINE

Item	Description	Min Order/ Case Pack	List Price (€)
a. GMT13105	Rectangular Half Size, 33 x 25.5 x 12.5 cm	1 / 6	38.18 ea
b. GMT21125	Rectangular Full Size, 52 x 30.5 x 12.5 cm	1 / 6	50.47 ea
GMT1717	Square, 43 x 43 x 15 cm	1 / 4	47.74 ea
c. GMT2412	Oblong, 61 x 30.5 x 15 cm	1 / 4	47.74 ea
d. GMT2113	Rectangular, 53.5 x 33 x 14 cm	1 / 4	47.74 ea
e. MGMT2412	Oblong, White Melamine Insert (Fits GMT2412), 62 x 33 x 14 cm	1 / 6	19.49 ea
f. MGMT2113	Rectangular, White Melamine Insert (Fits GMT2113 & GM2113), 53.5 x 33 x 14 cm	1 / 6	24.05 ea



a



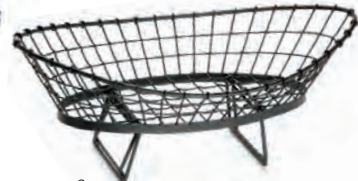
b



d



e



c



f



GRAND MASTER™ COLLECTION



BLACK POWDER COATED METAL

Item	Description	Min Order/ Case Pack	List Price (€)
a.	GM1212 Angled Square, 30.5 x 30.5 x 6.5 cm Front, 11.5 cm Back	1 / 4	33.60 ea
b.	GM1519 Angled Square, 38 x 49.5 x 6 cm Front, 20 cm Back	1 / 4	61.87 ea
c.	GM1608 Rectangular, 38 x 20.5 x 11 cm	1 / 4	22.13 ea
d.	GM2113 Rectangular, 53 x 33 x 14 cm	1 / 4	37.13 ea
	GM15 Round, 38 x 38 x 12.5 cm	1 / 4	24.74 ea

a



b



c



d

MEDITERRANEAN COLLECTION™



Oversized baskets, ideal for displaying a variety of products.

BLACK POWDER COATED METAL, TWO OR THREE-TIERED

Item	Description	Min Order/ Case Pack	List Price (€)
a.	BKT2A Two-Tiered, 23 & 27 cm dia Baskets, 31 cm H	1 / 8	27.84 ea
b.	BKT2 Two-Tiered, 25.5 & 30.5 cm dia Baskets, 63.5 H	1 / 2	44.90 ea
c.	BKT3 Three-Tiered, 25.5, 30.5 & 35.5 cm dia Baskets, 88 cm H	1 / 1	56.30 ea

a



b



c



**BUFFET, CATERING
& DISPLAY**
RISERS & DISPLAYS



REMINGTON COLLECTION™



Taking Stainless Steel to a new level, our beautifully innovative Remington Collection™ brings allure and expanded versatility to a popular serving material. This collection has uniquely shaped pieces with a distinctive rice pattern to add a touch of class that makes any event unforgettable.

ROUND DOUBLE WALL BOWLS, STAINLESS STEEL, RICE PATTERN



Item	Description	Capacity	Min Order/ Case Pack	List Price (€)
a. RB13	Round Double Wall Bowl, 32.5 x 19 cm	9 Litre	1 / 2	81.26 ea
b. RB11	Round Double Wall Bowl, 28.5 x 16.5 cm	5.5 Litre	1 / 6	65.77 ea
c. RB9	Round Double Wall Bowl, 24 x 12.5 cm	3.5 Litre	1 / 12	45.85 ea
d. RB63	Round Double Wall Bowl, 16.5 x 9 cm	0.9 Litre	1 / 24	18.60 ea

Item	Description	Min Order/ Case Pack	List Price (€)
a. R247	Rectangular Tray, 59.5 x 18.4 cm	1 / 8	66.07 ea
R1616	Square Tray, 40.5 x 40.5 cm	1 / 6	80.16 ea



*For more display options
see page 52*





REMINGTON COLLECTION™ CONTINUED



18-8 STAINLESS STEEL, RICE PATTERN

STAINLESS STEEL, RICE PATTERN

	Item	Description	Min Order/ Case Pack	List Price (€)
a.	RB164	Oblong Serving Bowl with Feet, 475 ml, 41.5 x 10 x 6.5 cm	1 / 6	37.08 ea
b.	RPD2415	Rectangular Tray, 18-8 (Fits Cover PC1 on p. 92) 59 x 38 x 2.5 cm	1 / 6	124.68 ea
c.	RT3	118 cm H, Three-Tiered Round Serving Set, 20.5, 28 & 35.5 cm Trays	1 / 4	82.73 ea



a



b



c

**BUFFET, CATERING
& DISPLAY**
RISERS & DISPLAYS



REMINGTON COLLECTION™



18-8 STAINLESS STEEL, RICE PATTERN

	Item	Description	Min Order/ Case Pack	List Price (€)
a.	RP1410	Round Bowl with Pedestal Base, 16 Litre, 35.5 cm dia x 26 cm H	1 / 4	95.33 ea
b.	R244	Rectangular Wave Tray, 61 x 10 cm H	1 / 12	45.05 ea



a



b

CRISTAL COLLECTION™



The exquisite Cristal Collection™ elevates acrylic buffetware beyond traditional settings. From classic trays to uniquely shaped bowls and risers, this collection looks like glass, but is lighter and more durable. Great for a variety of indoor or outdoor events. Provides elegance and glamour without the risk of breakage. Replacement legs available.

RECTANGULAR TRAYS, ACRYLIC

	Item	Description	Min Order/ Case Pack	List Price (€)
d.	A1613	Rectangular Tray, 42 x 33 cm	1 / 4	38.62 ea
	A207	Rectangular Tray, 49.5 x 17 x 2.5 cm	1 / 4	27.43 ea



d



CRISTAL COLLECTION™

RISERS, ACRYLIC



Item	Description	Min Order/ Case Pack	List Price (€)
a. A11	3 pc Riser Set, Half Moon, 54.5 x 28 x 5 cm, 60 x 30.5 x 10 cm, 65 x 33 x 15 cm	1 / 4	217.03 set
b. AW4	Four Step Waterfall, 39 x 30.5 x 16 cm	1 / 8	82.70 ea
AW5	Five Step Waterfall, 42 x 53.5 x 16 cm	1 / 6	119.45 ea
c. ARL3	3 pc Riser Set, Straight Legs, 40.5 x 13 x 2 cm, 40.5 x 13 x 7.5 cm, 40.5 x 13 x 12.5 cm	1 / 8	57.77 set



a

SQUARE BOWLS, ACRYLIC

Item	Description	Capacity	Min Order/ Case Pack	List Price (€)
e. AB8	Square Bowl, 19 x 10 cm	2 Litre	1 / 4	35.03 ea
f. AB14	Square Bowl, 35.5 x 12.5 cm	7.5 Litre	1 / 2	62.62 ea

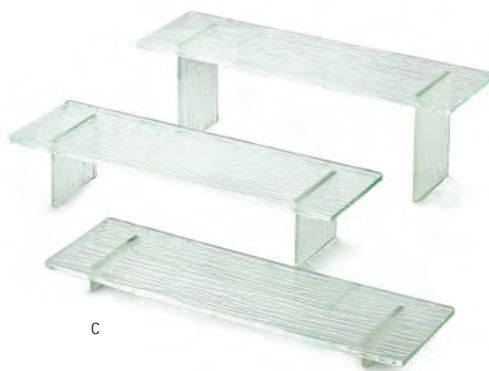


b



e

f



c

**BUFFET, CATERING
& DISPLAY**
RISERS & DISPLAYS



GASTRONORM WOOD CRATES

Not dishwasher safe, do not submerge in water. Wipe with damp cloth, dry immediately.

- Fits standard size food pans
- Integrated handles for easy transportation

Item	Description	Min Order/ Case Pack	List Price (€)
ACACIA WOOD			
a.	CRATE11 1:1 Gastro Serving & Display Crate, Acacia Wood, 53 x 32.5 x 7 cm	1 / 8	37.03 ea
	CRATE12 1:2 Gastro Serving & Display Crate, Acacia Wood, 32.5 x 26.5 x 7 cm	1 / 8	22.54 ea
	CRATE13 1:3 Gastro Serving & Display Crate, Acacia Wood, 32.5 x 17.5 x 7 cm	1 / 14	16.26 ea
	CRATE14 1:4 Gastro Serving & Display Crate, Acacia Wood, 25.5 x 16.5 x 7 cm	1 / 14	15.64 ea
b.	CRATE114 1:1 Gastro Serving & Display Crate, Acacia Wood, 52.5 x 32.5 x 11 cm	1 / 3	61.20 ea
	CRATE124 1:2 Gastro Serving & Display Crate, Acacia Wood, 32.5 x 25.5 x 11 cm	1 / 10	42.56 ea
	CRATE134 1:3 Gastro Serving & Display Crate, Acacia Wood, 32.5 x 17.5 x 11 cm	1 / 10	37.06 ea
	CRATE116 1:1 Gastro Serving & Display Crate, Acacia Wood, 52.5 x 32.5 x 16 cm	1 / 3	77.04 ea
c.	CRATE126 1:2 Gastro Serving & Display Crate, Acacia Wood, 32.5 x 25.5 x 16 cm	1 / 6	46.84 ea
	CRATE136 1:3 Gastro Serving & Display Crate, Acacia Wood, 32.5 x 17.5 x 16 cm	1 / 6	40.94 ea
	BLACK PAINTED WOOD		
	CRATE11BK 1:1 Gastro Serving & Display Crate, Black Painted Wood, 53 x 32.5 x 7 cm	1 / 8	38.64 ea
d.	CRATE12BK 1:2 Gastro Serving & Display Crate, Black Painted Wood, 32.5 x 26.5 x 7 cm	1 / 8	24.14 ea
	CRATE13BK 1:3 Gastro Serving & Display Crate, Black Painted Wood, 32.5 x 17.5 x 7 cm	1 / 14	17.98 ea
	CRATE14BK 1:4 Gastro Serving & Display Crate, Black Painted Wood, 25.5 x 16.5 x 7 cm	1 / 14	17.40 ea
	CRATE114BK 1:1 Gastro Serving & Display Crate, Black, 52.5 x 32.5 x 11 cm	1 / 3	56.38 ea
e.	CRATE124BK 1:2 Gastro Serving & Display Crate, Black, 32.5 x 25.5 x 11 cm	1 / 10	40.10 ea
	CRATE134BK 1:3 Gastro Serving & Display Crate, Black, 32.5 x 17.5 x 11 cm	1 / 10	33.83 ea
	CRATE116BK 1:1 Gastro Serving & Display Crate, Black, 52.5 x 32.5 x 16 cm	1 / 3	72.40 ea
	CRATE126BK 1:2 Gastro Serving & Display Crate, Black, 32.5 x 25.5 x 16 cm	1 / 6	43.18 ea
f.	CRATE136BK 1:3 Gastro Serving & Display Crate, Black, 32.5 x 17.5 x 16 cm	1 / 6	38.30 ea

a

b

c

d

e

f



RUSTIC RISERS™



Add rustic charm to your buffet setting and display with TableCraft's Rustic Risers™ Crate Sets. Use as a riser to add height to your setting or use as an attractive storage option. Chalkboard panel or decorative organising and labeling. Crate set nests together for convenient and space saving storage.

- Base of crate provides flat surface for versatile display options
- Easy maintenance; lightly clean with a damp cloth and dry immediately.

Item	Description	Min Order/ Case Pack	List Price (€)
a. RBCRATE1	Natural Wood Crate Set with Chalkboard, Small 35 x 25.5 x 18 cm, Medium 40.5 x 30 x 23.5 cm, Large 49 x 34.5 x 26.5 cm	1 / 1	75.38 set
b. RBCRATE2	Distressed Wood Crate Set with Chalkboard, Small 30.5 x 21 x 15.5 cm, Medium 37 x 23 x 17.5 cm, Large 42 x 30 x 19 cm	1 / 1	62.81 set



GEO-MATES™

Elevate your presentation with our uniquely designed riser system. TableCraft's Geo-Mates™ are a one-of-a-kind riser set that expands to fit your needs; providing a fresh addition to any setting.

BAMBOO WOOD OR BLACK FINISH

Item	Description	Min Order/ Case Pack	List Price (€)
a. RW555BAM	3 pc Expandable Riser Set, Bamboo, 14 x 14 x 11.5 cm	1 / 12	19.32 ea
RW555BK	3 pc Expandable Riser Set, Black, 14 x 14 x 11.5 cm	1 / 12	17.71 ea



CASCADE RISERS™

Elevate your buffet presentation with TableCraft's Cascade Riser™ sets. Whether you want to nest them together or fan them apart, TableCraft's Cascade Risers™ provide attractive versatility for your buffet offering.

- Small (44 x 18 x 11.5 cm) / Medium (48.5 x 18 x 15.5 cm) / Large (56 x 18 x 18 cm)
- Clean with a damp cloth and dry immediately

Item	Description	Min Order/ Case Pack	List Price (€)
RACA300	Cascade Risers™, Acacia Wood, Set of 3	1 / 1	136.91 set
RBAM300	Cascade Risers™, Bamboo Wood, Set of 3	1 / 1	136.91 set
a. RBK300	Cascade Risers™, Black Painted Wood, Set of 3	1 / 1	136.91 set



**BUFFET, CATERING
& DISPLAY**
RISERS & DISPLAYS

NEW



RTT21R fits onto riser to keep shakers organised for tabletop pizza service!



a



b



See page 36 - 37 for Frostone Slate Platters

MINI TABLE TRAY STANDS



Modeled after our classic full size tray stands, these risers open on your tabletop to elevate your entrees, appetiser plates or pizzas and free up valuable table space.

- Heat safe, non-slip grips
- Safely holds up to 13.5 kg.
- Wide base for stability, 24 x 20.5 cm, height on tabletop, 23.5 cm

Item	Description	Min Order/Case Pack	List Price (€)
a. RTT21N	Mini Table Tray Stand, 23.5 cm h, Natural Finish	1 / 16	14.09 ea
RTT21BK	Mini Table Tray Stand, 23.5 cm h, Black Finish	1 / 16	15.70 ea
RTT21MG	Mini Table Tray Stand, 23.5 cm h, Mahogany Finish	1 / 16	15.70 ea

REPLACEMENT PARTS & ACCESSORIES

RTT21R	Rack for RTT21 Mini Table Tray Stands, Stainless Steel, 13.5 x 28 x 8.5 cm	1 / 8	6.44 ea
--------	--	-------	---------

FROSTONE RISER FRAMES



Create a unique buffet setting with our Folding Frostone Riser Frames. Available in Acacia or Black Painted Wood to match any décor. Frames feature silicone pads to keep Frostone Slate Display Trays in place while on your buffet. Frames fold flat when not in use for convenient storage.

Item	Description	Min Order/Case Pack	List Price (€)
RMG2BK	Two Tiered Folding Frostone Riser Frame, Black (Fits MG1 & MGL2), 58.5 x 20.5 x 29 cm	1 / 10	31.65 ea
b. RMG1BK	Two Tiered Folding Frostone Riser Frame, Black (Fits MG2 & MG3), 38 x 20.5 x 29 cm	1 / 15	26.38 ea
RMG2ACA	Two Tiered Folding Frostone Riser Frame, Acacia (Fits MG1 & MGL2), 58.5 x 20.5 x 29 cm	1 / 10	29.90 ea
RMG1ACA	Two Tiered Folding Frostone Riser Frame, Acacia (Fits MG2 & MG3), 38 x 20.5 x 29 cm	1 / 15	24.62 ea

Also available as complete kits with Black Frostone Slate Display trays (RMG1KIT* & RMG2KIT*)



FOLD-A-WAY™ RISER SET



Reversible design for versatility in your buffet settings or on your tabletop. Holds a variety of our bowls, platters and trays. Collapsible design to save valuable storage space.

- Heat safe, non-slip grips on all legs
- Safely holds up to 13.5 kg.
- Small 25.5 x 25.5 x 19 cm, Medium 37 x 37 x 28 cm, Large 42 x 42 x 38

NEW

Item	Description	Min Order/ Case Pack	List Price (€)
a. RFTT3ACA	Fold-A-Way™ Riser Set, Set of 3, Acacia	1 / 5	64.44 set
a. RFTT3BAM	Fold-A-Way™ Riser Set, Set of 3, Bamboo	1 / 5	64.44 set
b. RFTT3BK	Fold-A-Way™ Riser Set, Set of 3, Black	1 / 5	64.44 set

Also available to buy as individual pieces. Please contact your sales representative or customer service for more information.



BUTCHER BLOCK RISERS



Prepare and present on our Butcher Block Risers. Edge-grain Butcher Blocks (CBW1218175) are coated with food grade mineral oil. Black powder coated metal frame construction features cut-outs to easily place and remove Butcher Blocks while on the buffet line. Frame design is collapsible to store flat when not in use.

BLACK, POWDER COATED, BIRCH WOOD

Item	Description	Min Order/ Case Pack	List Price (€)
a. BBR18126	Butcher Block Riser, Black Powder Coated Frame w/ wood, Butcher Block Top (CBW1218175) 45.5 x 30.5 x 16.5 cm	1 / 1	98.40 ea
b. BBR181212	Butcher Block Riser, Black Powder Coated Frame w/ wood, Butcher Block Top (CBW1218175) 47 x 32 x 30 cm	1 / 1	142.08 ea



**BUFFET, CATERING
& DISPLAY**
RISERS & DISPLAYS



REMINGTON RISERS™



Make your buffet setting rise to the occasion with TableCraft's Stainless Steel Remington Risers™. The unique S-shape with rice pattern, Remington design provides an elegant presentation for your appetiser plates and side or dessert platters.

• Safely holds up to 16 kg.

STAINLESS STEEL

Item	Description	Min Order/ Case Pack	List Price (€)
a. RR1255	Small, 32.5 x 13 x 13.5 cm	1 / 24	19.32 ea
b. RR1665	Large, 37.5 x 15.5 x 16 cm	1 / 12	27.38 ea

NESTING RISERS

ROUND, BRUSHED STAINLESS STEEL

Multi-purpose design, use as a base for your bowl or a column to elevate your presentation. Saves space, nestable for convenient storage. Set includes sizes of 7.5, 15 and 23 cm.

Item	Description	Min Order/ Case Pack	List Price (€)
RR3	3 pc Riser Set, 20.5 dia x 23 cm h, 18 dia x 15 cm h, 15 dia x 7.5 cm h	1 / 2	99.55 set

TIERED RISERS

Add height and dimension to any display or buffet.

ROUND, BLACK POWDER COATED METAL

Includes a pack of 16 slip resistant feet. Accommodates bowls with 28 cm diameter.

Item	Description	Min Order/ Case Pack	List Price (€)
BKP4	Four-Tiered Stand, 23 dia x 37 cm h	1 / 4	67.39 ea

REPLACEMENT PARTS & ACCESSORIES

Item	Description	Min Order/ Case Pack	List Price (€)
MB103	Bowl, White Melamine, 25.5 x 7.5 cm	1 / 6	8.04 ea

*MB103 Melamine bowls not included

NON-SLIP RISERS

SQUARE, CHROME PLATED OR BLACK POWDER COATED

Use alone or as a set, this simple design allows your food to take center table. Perfect for deli case displays.

Item	Description	Min Order/ Case Pack	List Price (€)
a. CR3	3 pc Riser Set, Chrome Plated 15 x 15 x 5 cm, 15 x 15 x 7.5 cm, 15 x 15 x 10 cm	1 / 1	52.13 set
BKR4	4 pc Riser Set, Black 18 x 15 x 5 cm, 18 x 15 x 7.5 cm, 18 x 15 x 10 cm, 18 x 15 x 15 cm	1 / 1	51.12 set





BARCLAY RISERS™

Add height and dimension to any display or buffet. Conveniently nests to store when not in use.

SQUARE, WOOD & BRUSHED STAINLESS STEEL

Item	Description	Min Order/ Case Pack	List Price (€)
a. WBK3	3 pc Riser Set, Black, Wood Set Includes sizes: 13, 18, & 23 cm squares	1 / 2	81.79 set
b. RS3	3 pc Riser Set, Brushed S/S Set Includes sizes: 13, 18, & 23 cm squares	1 / 2	123.10 set
c. WBAM3	3 pc. Riser Set, Bamboo Wood Set Includes sizes: 13, 18, & 23 cm squares	1 / 2	82.42 set



WRITE-ON™ DISPLAY RISERS & STORAGE CONTAINERS



Show, share and store. Chalkboard surface for easy labeling offers height and dimension to any food setting. Made of eco-friendly bamboo. Polypropylene insert allows for safe storage. Includes chalk. Hand wipe with a damp cloth for easy cleaning.

• Chalkboard surface on one side only

WOOD RISERS

Item	Description	Min Order/ Case Pack	List Price (€)
RCBR555	Round 12.5 x 12.5 x 12.5 cm	1 / 4	20.14 ea
a. RCBR668	Round 15 x 15 x 20.5 cm	1 / 4	32.62 ea
RCBR9910	Round 23 x 23 x 25.5 cm	1 / 4	55.94 ea
RCBS445	Square 10 x 10 x 14 cm	1 / 4	15.31 ea
b. RCBS667	Square 15 x 15 x 18 cm	1 / 4	24.77 ea
c. RCBS1387	Rectangular 33 x 20.5 x 18 cm	1 / 4	43.49 ea



**BUFFET, CATERING
& DISPLAY**
RISERS & DISPLAYS



a

CAKE SETS, STANDS & COVERS



CAKE SETS

Item	Description	Min Order/ Case Pack	List Price (€)
a. 821422	Cake Stand/Cover Set, 33 cm dia x 35 cm H	1 / 1	34.08 ea
*H820P422	Cake Plate/Cover Set, 32.5 cm dia x 18 cm H	1 / 1	29.40 ea

CAKE DOME, SAN PLASTIC

Item	Description	Min Order/ Case Pack	List Price (€)
b. PCD1	Cake Dome, 30 x 14.5 cm	1 / 6	12.58 ea
c. PCD2	Cake Dome, 30 x 13 cm	1 / 6	15.07 ea



b



c



CAKE SETS, STANDS & COVERS



STAINLESS STEEL STANDS, CAKE PLATES & STYRENE COVERS
H820P is individually boxed.

Item	Description	Min Order/ Case Pack	List Price (€)
a.	821U Unassembled Stand, 17 cm	1 / 12	20.45 ea
b.	422 Metal Handle Cover, 30.5 x 18 cm	1 / 6	10.18 ea
c.	H820P Low Profile Cake Plate, 32.5 x 4 cm	1 / 12	15.70 ea
d.	421 Plastic Handle Cover, 30.5 x 19 cm	1 / 6	9.74 ea



a



b

c



d



PADDLE FLIGHTS



REVERSIBLE PADDLE FLIGHTS

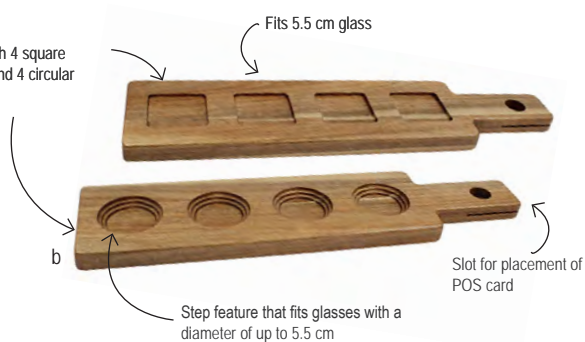
A fun alternative to serving sample tastings of beer, cocktails or appetisers. Reversible to accommodate FLBEER4 and FLGLASS4. Slot for merchandising card to label your samples.



Great for sharing beer & cocktail tastings

Item	Description	Min Order/ Case Pack	List Price (€)
a. FLIGHT1	Wood Paddle Flight, Bamboo, Holds 4 Glasses (Up to 5.5 cm dia) 43 x 10 x 1.5 cm *Glasses Not Included	1 / 10	8.16 ea
b. FLIGHT2	Wood Paddle Flight, Acacia, Holds 4 Glasses (Up to 5.5 cm dia) 43 x 10 x 1.5 cm * Glasses Not Included	1 / 10	8.16 ea

Reversible Paddle with 4 square cutouts on one side and 4 circular cutouts on the other.



TASTING SETS



Available in two different styles to match any décor: Mason Jar and Vintage. Glass sets to coordinate with FLIGHT1 & FLIGHT2.



Item	Description	Min Order/ Case Pack	List Price (€)
a. FLBEER4	135 ml (4½ oz) Mason Jar Glasses (4 per Pack)	1 / 6	4.39 pk
b. FLGLASS4	120 ml (4 oz) Vintage Style Glasses (4 per Pack)	1 / 6	4.39 pk



NEW

SINGLE SERVE JARS WITH LIDS



Serve up perfectly portioned parfaits, juices and more with our new Single Serve Glass Jars with Plastic Lids for convenient, sealed storage.

Item	Description	Min Order/Case Pack	List Price (€)
SGJ4	120 ml (4 oz) Glass Single-Serve Jars with Lids (12 per Pack)	1 / 4	15.30 pk
SGJ6	170 ml (6 oz) Glass Single-Serve Jars with Lids (12 per Pack)	1 / 4	18.34 pk
REPLACEMENT PARTS & ACCESSORIES			
SGJ4LID	Lids for SGJ4 (12 ea Per Pack)	1 / 12	2.40 ea
SGJ6LID	Lids for SGJ6 (12 ea Per Pack)	1 / 12	2.91 ea



DESSERT FLIGHTS



Serve your appetisers or dessert tastings with our 6-Piece Resealable Jar Tasting Flight Set. Set includes: (5) rustic, resealable jars with clip-top lids and an attractive wood carrying crate. These charming jars are the perfect size for shareable sides, appetisers or desserts. Pair with our Disposable Wood Tasting Spoons to create a unique presentation. Resealable, clip-top lid with rubber seal offers a unique storage solution for your side sauces or fixings.

	Item	Description	Min Order/Case Pack	List Price (€)
a.	HFLGLASS5	(5) 70 ml Jars with Crate, 6-Piece Resealable Jar Set, 29 x 7.5 x 8.5 cm	1 / 4	10.46 ea
b.	BAMSP425	Disposable Wood Tasting Spoons, 11 cm (100 Per Pack)	1 / 12	6.84 pk



BUFFET, CATERING & DISPLAY
BUFFET ACCESSORIES & DISPOSABLES



Dalton
COLLECTION™

DALTON COLLECTION™ SERVING UTENSILS

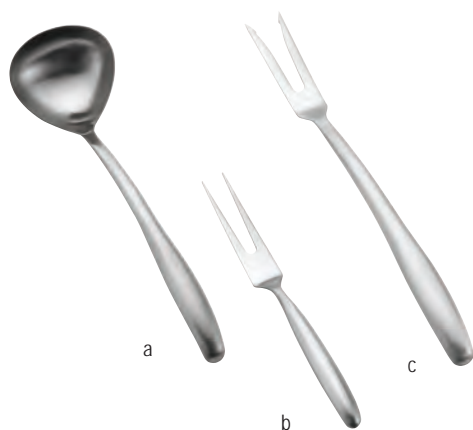


HOLLOW HANDLE, 18-8 STAINLESS STEEL

Elegant and stylish buffet serving utensils.

Curved handle design prevents utensils from accidentally sliding into your dishes.

Brushed, solid heavy weighted utensils.



Item	Description	Min Order/ Case Pack	List Price (€)
a. 5304	120 ml Soup Ladle, 33 cm	1 / 12	27.38 ea
b. 5311	2 Tine Meat Serving Fork, 24 cm	1 / 12	11.28 ea
c. 5312	2 Tine Buffet Fork, 34 cm	1 / 12	12.89 ea
d. 5313	Solid Turner, 35 cm	1 / 12	20.95 ea
e. 5314	Slotted Turner, 36 cm	1 / 12	20.95 ea
f. 5331	Buffet Cake Server, 25.5 cm	1 / 12	14.50 ea
g. 5332	Buffet Server, 26 cm	1 / 12	14.50 ea
h. 5333	Solid Serving Spoon, 26 cm	1 / 12	12.89 ea
i. 5334	Slotted Serving Spoon, 35 cm	1 / 12	12.89 ea
j. 5368	Pasta Grabber, 32 cm	1 / 12	12.89 ea



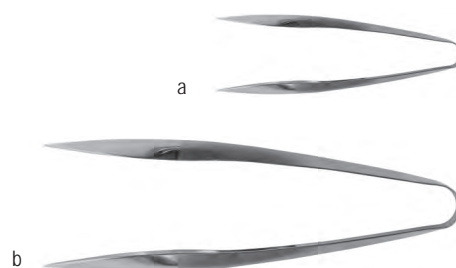
DALTON II COLLECTION™ SERVING UTENSILS



HOLLOW HANDLE, 18-8 STAINLESS STEEL

Elegant and stylish buffet serving utensils. Curved handle design prevents utensils from accidentally sliding into your dishes. Brushed/mirror finish.

	Item	Description	Min Order/ Case Pack	List Price (€)
a.	3606	Brushed Finish, 15 cm	1 / 12	5.73 ea
	3609	Brushed Finish, 23 cm	1 / 12	10.12 ea
b.	3612	Brushed Finish, 30.5 cm	1 / 12	11.88 ea



SERVING UTENSILS



HOLLOW HANDLE, STAINLESS STEEL

	Item	Description	Min Order/ Case Pack	List Price (€)
c.	4331	Pastry Turner, 28 x 5 x 3.5 cm	1 / 12	3.94 ea



SPOON RESTS



STAINLESS STEEL

NEW

	Item	Description	Min Order/ Case Pack	List Price (€)
d.	HVSP1	Vertical Spoon Rest, 12 x 9 x 21 cm	6 / 6	6.46 ea
e.	HB1	Single Spoon Rest, Brushed Finish, 30.5 x 10 x 4 cm	12 / 12	5.47 ea

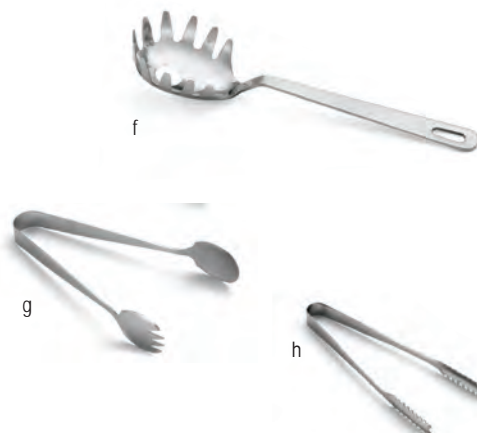


SERVING UTENSILS



Keep your buffet line moving with our selection of serving tongs & pasta grabbers.

	Item	Description	Min Order/ Case Pack	List Price (€)
f.	2068	Pasta Grabber, Oval Bowl, 26.5 cm	1 / 12	7.10 ea
g.	4403	Tongs, 19 cm	1 / 12	4.34 ea
h.	4405	Tongs, 16.5 cm	1 / 12	2.28 ea
	500LC	Polystyrene Ladle, 200 ml	12 / 12	4.30 ea



**BUFFET, CATERING
& DISPLAY**
BUFFET ACCESSORIES & DISPOSABLES



CHALKBOARD CLIP



CHALKBOARD WITH CLOTHESPIN CLIP

Wipe clean with damp cloth.

Item	Description	Min Order/ Case Pack	List Price (€)
BAMCBP	Chalkboard with Clothespin Clip, 7.5 x 7 cm (6 per pack)	1 / 12	2.42 pk

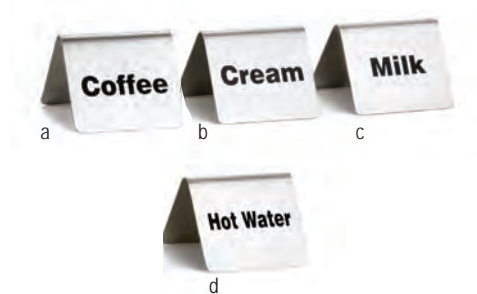
BUFFET TENTS



Identify or customise any beverage or buffet service.

STAINLESS STEEL

	Item	Description	Min Order/ Case Pack	List Price (€)
a.	B1	Coffee, 6.5 x 5 cm	1 / 200	3.60 ea
b.	B6	Cream, 6.5 x 5 cm	1 / 200	3.60 ea
	B3	Hot Tea, 6.5 x 5 cm	1 / 200	3.60 ea
c.	B5	Milk, 6.5 x 5 cm	1 / 200	3.60 ea
d.	B7	Hot Water, 6.5 x 5 cm	1 / 200	3.60 ea





BUFFET TENTS CONTINUED



Perfect for labeling your buffet. For use with chalkboard marker / pen. Versatile three-option design to customise the look of your buffet. Standard black & white options, purple for allergen identification and green for vegetarian/vegan identification.

MELAMINE, 9 X 6.5 X 4.5 CM

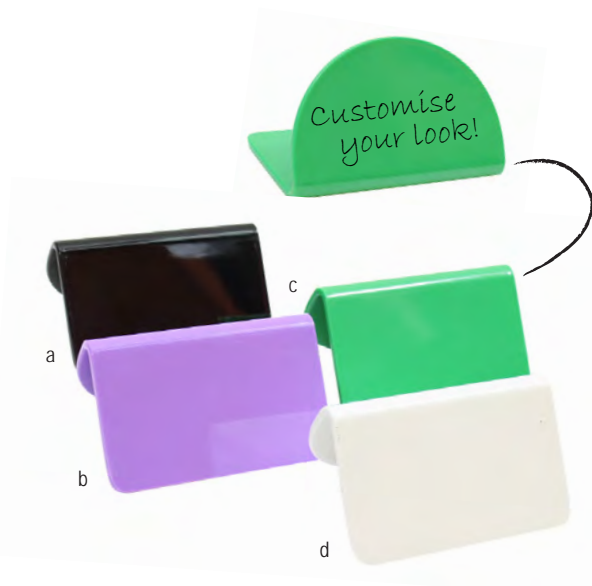
	Item	Description	Min Order/ Case Pack	List Price (€)
a.	M10BK	Melamine Table Tent, Black	1 / 12	3.14 ea
b.	M10PR	Melamine Table Tent, Purple	1 / 12	3.14 ea
c.	M10GN	Melamine Table Tent, Green	1 / 12	3.14 ea
d.	M10W	Melamine Table Tent, White	1 / 12	3.14 ea

PORCELAIN

Customise your buffet tent with dry erase or bistro markers. Markers not included.



	Item	Description	Min Order/ Case Pack	List Price (€)
g.	P16	Plain, 9 x 5 cm	1 / 6	3.17 ea



MAGNETIC CARD SIGN HOLDERS

Customise your own menu cards. Cards not included

ACRYLIC

	Item	Description	Min Order/ Case Pack	List Price (€)
a.	A360	Angled Round, 9.5 x 4.5 cm	1 / 12	17.14 ea
b.	A362	Rectangular, 10 x 3 x 6.5 cm	1 / 12	7.25 ea
	ACHS46	Slanted Rectangular, 10 x 15 x 4 cm	1 / 12	19.73 ea





MENU HOLDERS & TABLE TENTS



Great for highlighting food or drink specials. Cards not included.

ACRYLIC

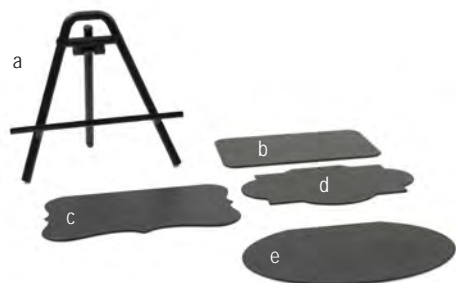
	Item	Description	Min Order/ Case Pack	List Price (€)
a.	AS57	Curved Menu Holder, Acrylic, Fits a 14 x 21.5 cm Sheet	1 / 24	13.94 ea
b.	AS811	Curved Menu Holder, Acrylic, Fits a 21.5 x 28 cm Sheet	1 / 24	22.80 ea



BUFFET EASELS & PLAQUES



Add unique charm to your buffet setting with our Buffet Easels & Chalkboard Plaques. Available in a variety of styles. For use with chalkboard marker / pen (CBP2WH).



	Item	Description	Min Order/ Case Pack	List Price (€)
a.	12004	Card Holder Easel, Black Powder Coated, 9 x 3.5 x 8.5 cm, 2 per Pack	1 / 12	7.25 pk
	12006	Card Holder Easel, Acrylic, 9 x 9 cm, 2 per Pack	1 / 12	8.86 pk
b.	12000	Chalkboard Plaque, Rectangle, 9 x 5 cm, 6 per Pack	1 / 12	6.46 pk
c.	12003	Chalkboard Plaque, Decorative, 9 x 5 cm, 6 per Pack	1 / 12	6.46 pk
d.	12002	Chalkboard Plaque, Marquee, 9 x 5 cm, 6 per Pack	1 / 12	6.46 pk
e.	12001	Chalkboard Plaque, Oval, 9 x 5 cm, 6 per Pack	1 / 12	6.46 pk
	CBP2WH	Chalkboard Pens, White, 2 per Pack	1 / 12	2.01 pk



CARD & NUMBER HOLDERS



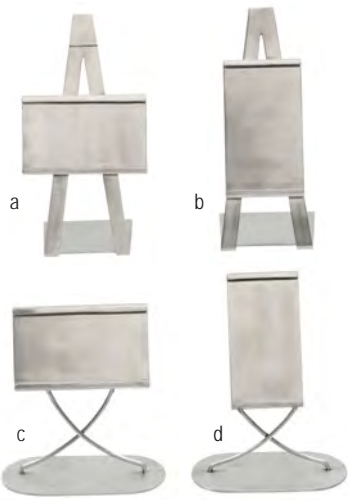
Customise your buffet offerings with TableCraft's collection of labeling options and table number/ menu card holders. Vertical and Horizontal Stainless Steel Easel Card Holders fit 9 x 5 cm cards. Cards not included.

STAINLESS STEEL

Item	Description	Min Order/ Case Pack	List Price (€)
a. CHH100	Horizontal Easel Card Holder, 9 x 7 x 16.5 cm	1 / 12	9.16 ea
b. CHV100	Vertical Easel Card Holder, 7 x 7.5 x 16.5 cm	1 / 12	8.66 ea
c. CHH200	Horizontal Card Holder, 11.5 x 6 x 11.5 cm	1 / 12	7.72 ea
d. CHV200	Vertical Card Holder, 11 x 6 x 14 cm	1 / 12	7.76 ea

NICKEL PLATED, OR BAMBOO

Item	Description	Min Order/ Case Pack	List Price (€)
a. BFCH4	Fork Card Holder, Stainless Steel, 10 cm	12 / 12	2.90 ea
b. 4CHSBK	Square Clip, Black, Plastic, 10 cm	1 / 12	2.90 ea
c. 4CHS	Square Clip, Silver, Plastic, 10 cm	1 / 12	2.90 ea
d. 4CHR	Round Clip, Silver, Plastic, 10 cm	1 / 12	2.90 ea
e. 4CHT	Triangle Clip, Silver, Plastic, 12 cm	1 / 12	2.90 ea
f. CHX4	Double-sided Clip, Steel, 11.5 cm	1 / 12	2.02 ea
g. CHX8	Double-sided Clip, Steel, 21.5 cm	1 / 12	2.47 ea
h. CH2	Circle Clip, Stainless Steel, 5 x 5 x 9 cm	1 / 12	2.74 ea
CH5	Square Clip, Clear Plastic, 11.5 cm	1 / 12	2.33 ea
i. 5CHBAM	Square, Bamboo, Metal Clip, 12.5 cm	12 / 12	2.90 ea
j. 5CHBAMCP	Square, Bamboo, Clothespin Clip, 12.5 cm	12 / 12	2.90 ea



**BUFFET, CATERING
& DISPLAY**
BUFFET ACCESSORIES & DISPOSABLES



CARD & NUMBER HOLDERS CONTINUED



STAINLESS STEEL OR NICKEL PLATED



	Item	Description	Min Order/ Case Pack	List Price (€)
a.	2504	Harp Clip, Stainless Steel, 10 cm	1 / 6	5.33 ea
	2508	Harp Clip, Stainless Steel, 20.5 cm	1 / 6	6.48 ea
	2512	Harp Clip, Stainless Steel, 20.5 cm	1 / 6	7.63 ea
b.	1306	Card Holder, Stainless Steel Deluxe, 15 cm	1 / 6	10.94 ea
c.	596	Card Holder, Heavy Nickel Plated, 5 cm	1 / 2	16.99 dz
d.	797	Harp Clip, Stainless Steel, 4 cm	1 / 10	16.99 dz

STAINLESS STEEL OR BLACK ANODIZED CAST ALUMINIUM



NEW

NEW

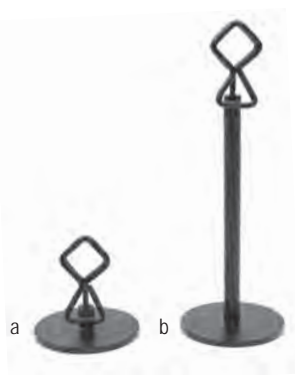
NEW

	Item	Description	Min Order/ Case Pack	List Price (€)
a.	RCH21	Card Holder, 5 x 3 cm	1 / 6	4.03 ea
b.	RCH41	Card Holder, 10 x 2.5 cm	1 / 6	5.81 ea
c.	RCW41	Wavy Card Holder, 10 x 4 x 2 cm	1 / 6	5.81 ea
d.	CHCR100BK	Round Cast Aluminium Card Holder, Black Anodized, 2 cm dia x 4 cm	1 / 12	12.08 ea
e.	CHCR120BK	Slanted Round Cast Aluminium Card Holder, Black Anodized, 3 cm dia x 5.5 cm	1 / 12	20.94 ea
f.	CHCT125BK	Triangular Cast Aluminium Card Holder, Black Anodized, 3 x 3 x 2 cm	1 / 12	11.28 ea

BLACK POWDER COATED METAL

Features easy open thumb clip.

NEW



	Item	Description	Min Order/ Case Pack	List Price (€)
a.	BKC2202	Metal Card & Number Holder Stand with Clip, 5 cm	1 / 12	4.19 ea
	BKC2206	Metal Card & Number Holder Stand with Clip, 15 cm	1 / 12	4.83 ea
b.	BKC2208	Metal Card & Number Holder Stand with Clip, 20.5 cm	1 / 12	5.15 ea
	BKC2212	Metal Card & Number Holder Stand with Clip, 30.5 cm	1 / 12	5.64 ea



CARD & NUMBER HOLDERS CONTINUED

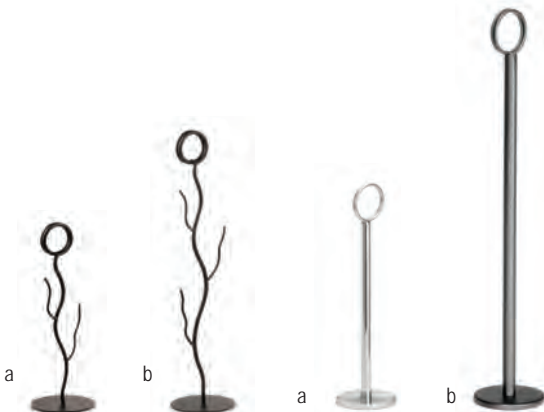


BLACK POWDER COATED METAL

	Item	Description	Min Order/ Case Pack	List Price (€)
a.	BKB8	Branch, Black, 20.5 cm	1 / 12	3.77 ea
b.	BKB12	Branch, Black, 30.5 cm	1 / 12	4.54 ea

CHROME PLATED OR BLACK POWDER COATED METAL

	Item	Description	Min Order/ Case Pack	List Price (€)
a.	1908	Chrome Plated, Flat Bottom, 20.5 cm	1 / 20	3.74 ea
	1912	Chrome Plated, Flat Bottom, 30.5 cm	1 / 20	4.30 ea
	BK1908	Black, Flat Bottom, 20.5 cm	1 / 12	2.86 ea
b.	BK1912	Black, Flat Bottom, 30.5 cm	1 / 12	3.26 ea
	BK1915	Black, Flat Bottom, 38 cm	1 / 12	3.89 ea



STAINLESS STEEL TAGS

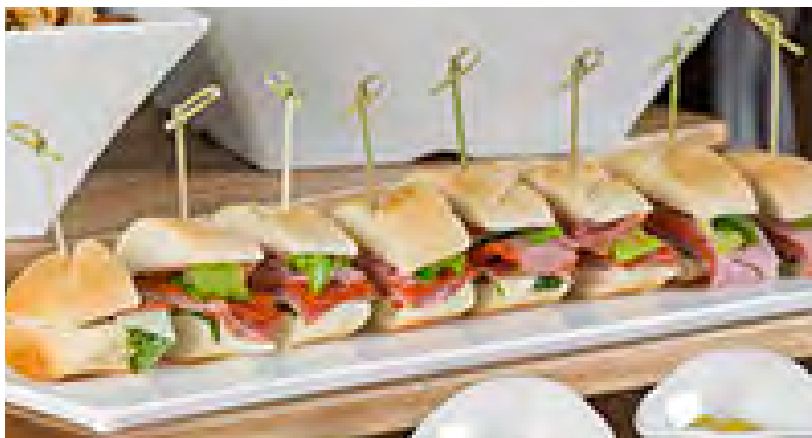


Wipe clean with damp cloth.

	Item	Description	Min Order/ Case Pack	List Price (€)
a.	CBTSS3	Stainless Steel Tag with Chalkboard, 7.5 x 4.5 cm (6 per pack) Chalk Not Included	1 / 12	18.91 pk
b.	40001	Hanging Buffet Tag / Card Holder, Black Powder Coated, 10 x 7 x 1.5 cm	1 / 12	5.15 ea



**BUFFET, CATERING
& DISPLAY**
BUFFET ACCESSORIES & DISPOSABLES



BAMBOO PICKS



Disposable, eco-friendly, stylish and trendy. For sanitary reasons, use one time only. Polybagged 100 per pack.

CARD HOLDER PICKS

Item	Description	Min Order/ Case Pack	List Price (€)
a. BAML35	9 cm Card Holder Pick	1 / 12 pk	6.50 pk
b. BAML45	11.5 cm Card Holder Pick	1 / 12 pk	7.18 pk
BAML7	18 cm Card Holder Pick	1 / 12 pk	7.80 pk

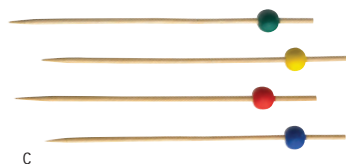
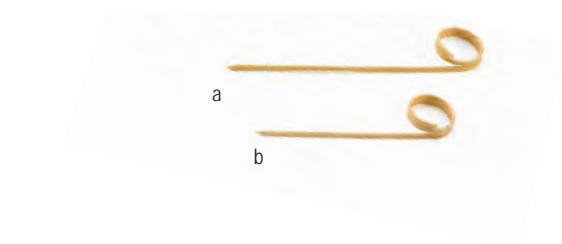
BALL PICKS

Item	Description	Min Order/ Case Pack	List Price (€)
c. BAMBA35	9 cm Pick - Assorted (25 ea: Red, Yellow, Green, Blue)	1 / 12 pk	3.86 pk
BAMBA45	11.5 cm Pick - Assorted (25 ea: Red, Yellow, Green, Blue)	1 / 12 pk	4.06 pk
BAMBA7	18 cm Pick - Assorted (25 ea: Red, Yellow, Green, Blue)	1 / 12 pk	4.39 pk

SPORTS PICKS

Polybagged 100 pieces per pack.

Item	Description	Min Order/ Case Pack	List Price (€)
d. BAMSP145	11.5 cm Bamboo Baseball Sport Pick	1 / 12 pk	8.30 pk
e. BAMSP245	11.5 cm Bamboo Basketball Sport Pick	1 / 12 pk	8.30 pk
f. BAMSP445	11.5 cm Bamboo Tennis Sport Pick	1 / 12 pk	8.30 pk
g. BAMSP545	11.5 cm Bamboo Soccer Sport Pick	1 / 12 pk	9.67 pk
h. BAMSP645	11.5 cm Bamboo Football Sport Pick	1 / 12 pk	11.52 pk
i. BAMSP745	11.5 cm Bamboo Hockey Sport Pick	1 / 12 pk	5.98 pk
j. BAMSP345	11.5 cm Bamboo Golf Tee Sport Pick (Assorted: White, Red, Blue, Green)	1 / 12 pk	5.40 pk





BAMBOO PICKS CONTINUED



For sanitary reasons, use one time only. Polybagged 100 per pack.

BARK PICKS

Item	Description	Min Order/ Case Pack	List Price (€)
a. BAMBK35	9 cm Bark Pick	1 / 12 pk	3.77 pk
BAMBK45	11.5 cm Bark Pick	1 / 12 pk	4.20 pk

FORK PICKS

Item	Description	Min Order/ Case Pack	List Price (€)
b. BAMF35	9 cm Fork Pick	1 / 12 pk	1.27 pk

KNOT PICKS

Item	Description	Min Order/ Case Pack	List Price (€)
c. BAMK35	9 cm Knot Pick	1 / 12 pk	2.66 pk
d. BAMK45	11.5 cm Knot Pick	1 / 12 pk	2.86 pk
e. BAMK7	18 cm Knot Pick	1 / 12 pk	3.86 pk

LOOPED AND HEART LOOPED PICKS

Item	Description	Min Order/ Case Pack	List Price (€)
f. BAMH45	11.5 cm Heart Looped Bamboo Pick	1 / 12 pk	5.81 pk
g. BAMH6	6" Heart Looped Bamboo Pick	1 / 12 pk	6.02 pk

CHALKBOARD PICKS

Carton, 100 per carton.

Item	Description	Min Order/ Case Pack	List Price (€)
h. BAMDCB35	9 cm Chalkboard Pick	1 / 12 pk	10.49 pk



a



b



c



d



e



f



g



h



**BUFFET, CATERING
& DISPLAY**
BUFFET ACCESSORIES & DISPOSABLES



BAMBOO PICKS CONTINUED



For sanitary reasons, use one time only. Polybagged 100 per pack.

PADDLE PICKS

	Item	Description	Min Order/ Case Pack	List Price (€)
a.	BAMP35	9 cm Paddle Pick	1 / 12	1.90 pk
b.	BAMP45	11.5 cm Paddle Pick	1 / 12 pk	2.16 pk
c.	BAMP7	18 cm Paddle Pick	1 / 12 pk	2.52 pk

PADDLE PICKS, TEMPERATURE

	Item	Description	Min Order/ Case Pack	List Price (€)
a.	RARE	9 cm Rare Paddle Pick	1 / 12	3.86 pk
b.	MEDRARE	9 cm Medium Rare Paddle Pick	1 / 12	3.86 pk
c.	MEDIUM	9 cm Medium Paddle Pick	1 / 12	3.86 pk
d.	MEDWELL	9 cm Medium Well Paddle Pick	1 / 12	3.86 pk
e.	WELLDONE	9 cm Well Done Paddle Pick	1 / 12	3.86 pk

PADDLE PICKS, TEMPERATURE MARKERS, FRENCH

Polybagged 100 per pack.

- For sanitary reasons, use one time only.

	Item	Description	Min Order/ Case Pack	List Price (€)
a.	BIEN CUIT	9 cm Bien Cuit Paddle Pick	1 / 12	3.86 pk
b.	BLEU	9 cm Bleu Paddle Pick	1 / 12	3.86 pk
c.	A POINT	9 cm A Point Paddle Pick	1 / 12	3.86 pk
d.	SAIGNANT	9 cm Saignant Rare Paddle Pick	1 / 12	3.86 pk





BAMBOO PICKS CONTINUED



For sanitary reasons, use one time only. Polybagged 100 per pack.

PADDLE PICKS, VEGAN AND VEGETARIAN

	Item	Description	Min Order/ Case Pack	List Price (€)
a.	BAMP35VG	9 cm Vegan Paddle Pick	1 / 12	3.86 pk
b.	BAMP45VG	11.5 cm Vegan Paddle Pick	1 / 12	4.13 pk
c.	BAMP35V	9 cm Veg Paddle Pick	1 / 12	3.86 pk
d.	BAMP45V	11.5 cm Veg Paddle Pick	1 / 12	4.13 pk



PADDLE PICKS, ALLERGY AND GLUTEN-FREE

	Item	Description	Min Order/ Case Pack	List Price (€)
a.	BAMP45A	11.5 cm Allergy Paddle Pick	1 / 12	4.13 pk
b.	BAMP35G	9 cm Gluten-Free Paddle Pick	1 / 12	3.86 pk
	BAMP5G	12 cm Gluten-Free Paddle Pick	1 / 12	4.18 pk



PURPLE PADDLE PICKS

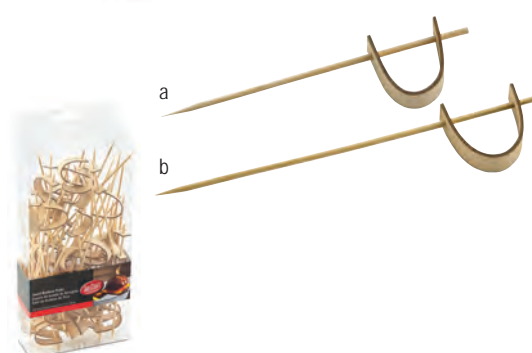
	Item	Description	Min Order/ Case Pack	List Price (€)
	BAMP45PR	11.5 cm Paddle Pick, Purple	1 / 12	3.62 pk



SWORD PICKS

Hangable acetate boxes. 50 per pack.

	Item	Description	Min Order/ Case Pack	List Price (€)
a.	BAMPS45	11.5 cm Sword Pick	1 / 12	3.72 pk
b.	BAMPS6	15 cm Sword Pick	1 / 12	4.03 pk



**BUFFET, CATERING
& DISPLAY**
BUFFET ACCESSORIES & DISPOSABLES



DISPOSABLE SERVING PIECES

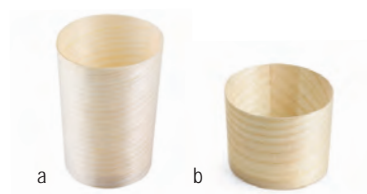
For sanitary reasons, use one time only. 50 per pack.



DISPOSABLE WOOD BOAT

Item	Description	Capacity	Min Order/ Case Pack	List Price (€)
a. BAMDB3	Small Disposable Wood Boat, 9 x 5 cm	30 ml	1 / 12	6.02 pk
b. BAMDB45	Medium Disposable Wood Boat, 12 x 5 cm	45 ml	1 / 12	6.86 pk
c. BAMDB5	Large Disposable Wood Boat, 13.5 x 8.5 cm	90 ml	1 / 12	7.63 pk
BAMDB65	Large Disposable Wood Boat, 16.5 x 9 cm	145 ml	1 / 12	9.67 pk
BAMDB8	Extra Large Disposable Wood Boat, 20.5 x 10 cm	235 ml	1 / 12	11.93 pk

DISPOSABLE WOOD CUP

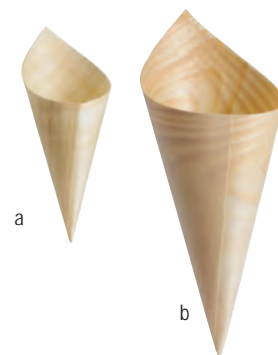


Item	Description	Capacity	Min Order/ Case Pack	List Price (€)
a. BAMDCP1	Small Disposable Serving Cup, 6.5 x 6.5 cm	120 ml	1 / 12	12.48 pk
b. BAMDCP2	Mini Disposable Serving Cup, 5 x 5 cm	60 ml	1 / 12	11.26 pk



DISPOSABLE SERVING PIECES CONTINUED

	Item	Description	Capacity	Min Order/ Case Pack	List Price (€)
a.	BAMDCN5	Mini Disposable Serving Cone, 4.5 x 12.5 cm	45 ml	1 / 12	6.26 pk
	BAMDCN6	Small Disposable Serving Cone, 5 x 15 cm	90 ml	1 / 12	6.67 pk
b.	BAMDCN7	Large Disposable Serving Cone, 7 x 18 cm	140 ml	1 / 12	9.67 pk

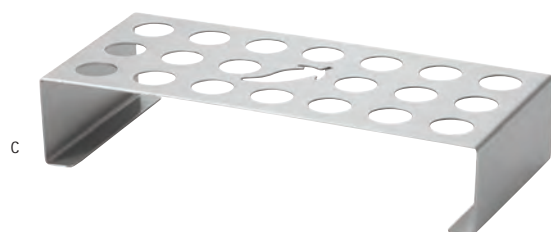


DISPOSABLE CONE HOLDERS



Present your appetisers, desserts and side samplings in a uniquely stylish way. Whether you're serving one appetiser per guest or need an attractive high volume serving solution to sit tabletop or on your buffet line, TableCraft offers a variety of cone holder options.

	Item	Description	Min Order/ Case Pack	List Price (€)
a.	DCH27	Disposable Cone Holder, Chrome Plated Metal, Holds 27 Cones, 42.5 x 18 x 18 cm	1 / 6	16.10 ea
	DCH27BK	Disposable Cone Holder, Black Powder Coated Metal, Holds 27 Cones, 42.5 x 18 x 18 cm	1 / 6	16.10 ea
b.	DCH01	Disposable Cone Holder, Black Powder Coated Metal, Holds 1 Cone, 10 x 6 x 7 cm	1 / 12	2.42 ea
c.	*BBQ3500	Cone Holder/Chili Pepper Roaster, Stainless Steel, Holds 20 Cones, 28 x 12.5 cm (2.5 cm hole diameter)	1 / 6	13.73 ea



**BUFFET, CATERING
& DISPLAY**
BUFFET ACCESSORIES & DISPOSABLES



DISPOSABLE CUTLERY

For sanitary reasons, use one time only.



BAMBOO TONGS

12 tongs per pack.

Item	Description	Min Order/ Case Pack	List Price (€)
a. BAMDT35	9 cm Small Bamboo Paddle Tong	1 / 12	5.23 pk
b. BAMDT6	15 cm Bamboo Paddle Tong	1 / 12	6.02 pk



BAMBOO FORKS

100 per pack



Item	Description	Min Order/ Case Pack	List Price (€)
BAMDF475	Bamboo Fork, 12 cm	1 / 12	13.20 pk



DISPOSABLE WOOD SERVING PIECES

25 per pack



NEW

NEW

NEW

NEW

Item	Description	Min Order/ Case Pack	List Price (€)
BAMSP425	Disposable Wood Spoon, 11 cm	1 / 12	6.84 pk
BAMDF65	Disposable Fork, 15 cm	1 / 12	2.09 pk
BAMDSPN65	Disposable Spoon, 15 cm	1 / 12	2.09 pk
BAMDKN65	Disposable Knives, 18 cm	1 / 12	2.09 pk
BAMDSET	Disposable Cutlery Set of 3 Includes: 15 cm Spoon, 15 cm Fork & 18 cm Knife	1 / 12	0.40 ea



DISPOSABLE PLATES

For sanitary reasons, use one time only. 25 per pack.



	Item	Description	Min Order/ Case Pack	List Price (€)
a.	BAMDRP7	Disposable Round Plate, 18 cm	1 / 12 pk	28.92 pk
b.	BAMDRP9	Disposable Round Plate, 23 cm	1 / 12 pk	41.88 pk
	BAMDRP11	Disposable Round Plate, 28 cm	1 / 12 pk	53.88 pk
c.	BAMDSP35	Disposable Square Plate, 9 cm	1 / 12 pk	11.04 pk
d.	BAMDSP7	Disposable Square Plate, 18 cm	1 / 12 pk	28.92 pk
e.	BAMDSP9	Disposable Square Plate, 23 cm	1 / 12 pk	41.88 pk
	BAMDSP10	Disposable Square Plate, 25.5 cm	1 / 12 pk	50.60 pk



**BUFFET, CATERING
& DISPLAY**
BUFFET ACCESSORIES AND DISPOSABLES



BEVERAGE & COUNTER SOLUTIONS

Refreshing Refreshments

From cold to hot beverage dispensing & service, TableCraft has a variety of solutions to fit your operation's needs. Our high quality beverage options are designed to keep beverages flowing and your operation moving. Our countertop solutions keep coffee stations organised and your breakfast buffets up to speed.

COLD BEVERAGE DISPENSERS

Page 76 - 83

BEVERAGE TUBS

Page 84 - 87

HOT BEVERAGE SERVERS & ACCESSORIES

Page 88 - 90

COUNTERTOP SOLUTIONS

Page 91 - 93



SILHOUETTE™ BEVERAGE DISPENSERS



11.5 LITRE, BPA FREE TRITAN® PLASTIC AND STAINLESS STEEL

Keep your cool with our attractive upscale Silhouette™ Cold Beverage Dispenser. Built to serve large crowds, our 11.5 Litre capacity dispenser is an attractive and storage friendly serving solution. BPA Free Tritan® reservoir provides durable, commercial quality construction. Infuser and ice core included. NSF® option available. 21.5 cm faucet clearance.

Item	Description	Capacity	Min Order/Case Pack	List Price (€)
175	Silhouette™ Cold Beverage Dispenser, 28.5 x 28.5 x 60 cm	11.5 Litre	1 / 1	91.22 ea
REPLACEMENT PARTS & ACCESSORIES				
75F	Heavy Duty Nickel Plated Faucet for 175	—	1 / 1	16.78 ea
175SB	Base, Stainless Steel for 175	—	1 / 1	50.18 ea
175LID	Lid, Stainless Steel for 175, with Plastic Insert	—	1 / 1	13.70 ea
N175F	Polypropylene NSF® Replacement Faucet, Black	—	1 / 1	10.53 ea
175INF	Infuser for 175	—	1 / 1	6.39 ea
175R	Reservoir for 175	11.5 Litre	1 / 1	41.74 ea



See page 92 for coordinating drip trays





UPSCALE BEVERAGE DISPENSERS



9.5 OR 19 LITRE, BPA FREE TRITAN® PLASTIC AND STAINLESS STEEL
 Brushed Stainless Steel lid and double wall base with BPA Free Tritan® reservoir
 to serve your chilled or infused beverages. Stainless Steel infuser and ice core included.

Item	Description	Capacity	Min Order/ Case Pack	List Price (€)
75	Single Dispenser, Infuser, Stainless Steel, BPA Free Reservoir, 27.5 x 27.5 x 50 cm (17 cm faucet clearance)	9.5 Litre	1 / 1	168.32 ea
85	Single Dispenser, Infuser, Stainless Steel, BPA Free Reservoir, 31 x 31 x 62 cm (18 cm faucet clearance)	19 Litre	1 / 1	235.54 ea
REPLACEMENT PARTS & ACCESSORIES				
75B	Base, Stainless Steel for 75	—	1 / 1	81.42 ea
75C	Cover for 75	—	1 / 1	27.14 ea
75F	Heavy Duty Nickel Plated faucet for 75 or 85	—	1 / 1	16.78 ea
75G	Gasket for 75	—	1 / 1	3.62 ea
75IC	Infuser for 75, Stainless Steel	—	1 / 1	34.10 ea
75R	Reservoir for 75	9.5 Litre	1 / 1	72.36 ea
75T	Ice Core Insert for 75, Stainless Steel	—	1 / 1	19.92 ea
85B	Base Stainless Steel for 85	—	1 / 1	83.76 ea
85C	Cover for 85	—	1 / 1	18.44 ea
85IC	Infuser for 85, Stainless Steel	—	1 / 1	40.20 ea
85R	Reservoir for 85	19 Litre	1 / 1	100.49 ea
85T	Ice Core Insert, Stainless Steel for 85	—	1 / 1	25.12 ea

Do not freeze liquids in Stainless Steel center ice core



Removable ice core (75T)



Removable infuser (75IC)



Removable ice core tube fits into removable infuser

BEVERAGE & COUNTER
 COLD BEVERAGE DISPENSERS



STACKABLE BEVERAGE DISPENSER



5.5 LITRE, BPA FREE PLASTIC

BPA Free Plastic Beverage Dispenser to serve your favourite cold beverages. Stackable to serve multiple beverages; compact, lightweight design to save counter space. Perfect for indoor and outdoor use. Infuser included to add flavour to your cold beverages. 12 cm faucet clearance.

Item	Description	Capacity	Min Order/ Case Pack	List Price (€)
BAD1500	BPA Free Beverage Dispenser with Infuser, 25 cm dia x 35 cm	6.5 Litre	1 / 4	26.57 ea
REPLACEMENT PARTS & ACCESSORIES				
BDGF	Faucet for BAD1500	—	1 / 1	5.14 ea



BEVERAGE PITCHERS



Clear, SAN Plastic. Lightweight & durable design.

Item	Description	Capacity	Min Order/ Case Pack	List Price (€)
a. PP321	Pitcher with Lid, Clear SAN Plastic	2 Litre	1 / 12	12.89 ea
b. PP322FIN	Infusion Pitcher with Lid, Clear SAN Plastic	2 Litre	1 / 6	15.84 ea



SLIMLINE BEVERAGE DISPENSERS



Slimline Cold Beverage Dispensers are designed to withstand the demands of a busy foodservice environment. Available in both single and twin dispenser options; Slimline beverage dispensers save valuable counterspace. Standard or heavy duty faucet available. Heavy duty faucet offers Tomlinson® fast flow faucet keeps your beverage station flowing. Hingeless cover design and detachable reservoir allow for fast prep and refill. Graduations on side of reservoir aid in beverage preparation. FDA approved polypropylene. 20.5 cm faucet clearance.

11.5 LITRE, PLASTIC SINGLE SLIMLINE DISPENSERS STANDARD FAUCET, 20.5 X 41 X 52.5 CM

Item	Description	Capacity	Min Order/ Case Pack	List Price (€)
356DPH	Single, Heavy Duty Faucet, Almond	11.5 Litre	1 / 1	59.04 ea
353DPH	Single, Heavy Duty Faucet, Black	11.5 Litre	1 / 1	59.04 ea
REPLACEMENT PARTS & ACCESSORIES				
852F	Heavy Duty Tomlinson® Faucet Assembly	—	1 / 100	22.73 ea
354WB	Replacement Reservoir for 356DPH	—	1 / 10	17.60 ea



BEVERAGE & COUNTER
COLD BEVERAGE DISPENSERS



GLASS BEVERAGE DISPENSERS



Serve your favourite cold beverages with rustic charm. Available in three styles to complement any décor: Beehive™, Rustic Country™ and Mason Jar™. Decorative Chalkboard Necklace included (BDCHBD) to label your cold beverages. 16.5 cm faucet clearance with use of Galvanised base (BDGTUB).



a



Item	Description	Capacity	Min Order/ Case Pack	List Price (€)
a. BDG1000	Beehive™ Glass Beverage Dispenser, Includes Chalkboard Necklace, Ice Core and Infuser, 23 x 27.5 x 37 cm	9.5 Litre	1 / 1	39.79 ea
b. BDG2000	Rustic Country™ Glass Beverage Dispenser with Resealable Lid, Includes Chalkboard Necklace, 21 x 26.5 x 35.5 cm	9.5 Litre	1 / 1	37.32 ea
c. BDG3000	Mason Jar™ Glass Beverage Dispenser, Includes Chalkboard Necklace, Ice Core and Infuser, 19.5 x 26 x 32 cm	7.5 Litre	1 / 1	39.79 ea



b



c





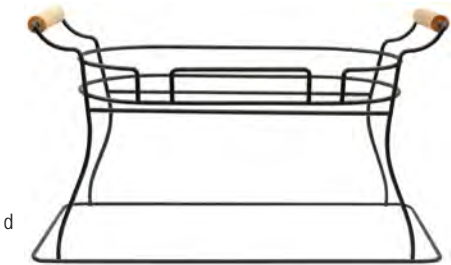
GLASS BEVERAGE DISPENSERS

REPLACEMENT PARTS & ACCESSORIES

Item	Description	Min Order/Case Pack	List Price (€)
a.	BDCHBD Chalkboard Necklace for Glass Beverage Dispensers	1 / 1	2.50 ea
	BDGF Faucet for Glass Beverage Dispensers	1 / 1	5.14 ea
b.	BDGTUB Galvanised Tub/Base for BDG1000, BDG2000 & BDG3000	1 / 1	9.67 ea
c.	BDGR1 Single Wire Glass Beverage Dispenser base, Black Powder Coated. For BDG1000, BDG2000 & BDG3000	1 / 1	18.48 ea
d.	BDGR2 Double Wire Glass Beverage Dispenser base, Black Powder Coated. For BDG1000, BDG2000 & BDG3000	1 / 1	27.27 ea



Shown with BDG1000 (base sold separately)



BEVERAGE & COUNTER
COLD BEVERAGE DISPENSERS



STAINLESS STEEL WATER PITCHERS



18-8 STAINLESS STEEL

Item	Description	Capacity	Min Order/ Case Pack	List Price (€)
a. 300	Pitcher, Ice Guard, Mirror Finish	2 Litre	1 / 12	37.63 ea
b. RP68	Pitcher with Base, Ice Guard, Remington Collection™	2 Litre	1 / 12	36.26 ea

For more of this collection, please see pages 44 - 46



AUTHENTIC GLASS COLLECTION WATER SERVERS



Enhance your beverage service with our Authentic Collection.
Recycled, green glass tint.

Item	Description	Capacity	Min Order/ Case Pack	List Price (€)
a. 6620	Authentic Carafe	0.8 Litre	6 / 6	6.00 ea
b. 6621	Authentic Resealable Bottle	1 Litre	6 / 6	6.60 ea
c. 6626	Glass Juice Jar with Metal Top	120 ml	24 / 24	4.39 ea



RESEALABLE GLASS CARAFES



Item	Description	Capacity	Min Order/Case Pack	List Price (€)
a. RGC8	Resealable Glass Carafe with Silicone Seal	250 ml	6 / 6	2.64 ea
b. RGC16	Resealable Glass Carafe with Silicone Seal	500 ml	6 / 6	3.53 ea
c. RGC34	Resealable Glass Carafe with Silicone Seal	1 Litre	6 / 6	4.40 ea



PRIMA GLASS RESEALABLE BOTTLE



Item	Description	Capacity	Min Order/Case Pack	List Price (€)
RSB33	Resealable Prima Glass Bottle	1 Litre	12 / 12	3.98 ea



BEVERAGE & COUNTER
COLD BEVERAGE PITCHERS & SERVERS



a

SINGLE WALL BEVERAGE TUBS



GALVANISED OR STAINLESS STEEL BEVERAGE TUBS

Item b has Galvanised Collection™ pebbled texture.

Item d has Remington Collection™ pattern.



b



c



d

Item	Description	Capacity	Min Order/ Case Pack	List Price (€)
a. BT1914	Oval Beverage Tub, Galvanised Steel, 48.5 x 35.5 x 23 cm	21 Litre	1 / 1	37.15 ea
HBT1914	Oval Beverage Tub, Galvanised Steel, Bulk Pack 6 ea 48.5 x 35.5 x 23 cm	21 Litre	6 / 6	33.29 ea
b. GT2313	Oval Beverage Tub, Galvanised Steel, Pebbled Texture, 58.5 x 33 x 19 cm	17 Litre	1 / 1	48.17 ea
c. BDGTUB	Round Beverage Tub, Galvanised Steel, 23 x 23 x 19 cm	5.5 Litre	1 / 1	9.67 ea
d. RBT2314	Oval Beverage Tub, 18-8 Stainless Steel, Remington Collection™, 59.5 x 35 x 23 cm	25.5 Litre	1 / 1	139.82 ea

For more of the Remington Collection, please see pages 44 - 46



NEW

BRICKHOUSE COLLECTION™ SINGLE WALL BEVERAGE TUB SET

Create a casual serving experience with our new Brickhouse Collection™ Beverage Tub. Perfect for high-volume beverage service and outdoor events.

- Set Includes: Beverage Tub, Stand, Condensation Tray and Accessory Tray
- Condensation Tray to catch condensation droplets; keeping your serving area safe and clean
- Black Powder Coated Stand assembles/disassembles with ease

STAINLESS STEEL, BRICKHOUSE PATTERN

Item	Description	Capacity	Min Order/ Case Pack	List Price (€)
a.	GTSS2313N Brickhouse Beverage Tub Set, 70 x 38 x 81 cm, Black Metal Stand	48 Litre	1 / 1	178.99 ea
b.	GTSS2313 Brickhouse Beverage Tub, 70 x 38 x 27.5 cm	48 Litre	1 / 1	71.78 ea
REPLACEMENT PARTS & ACCESSORIES				
c.	GTSS2313CT Condensation Tray, 60.5 x 32.5 cm		1 / 1	24.20 ea
d.	GTSS2313AT Brickhouse Accessory Tray, 63 x 32 cm		1 / 1	20.00 ea
	GTSS2313S Brickhouse Beverage Tub Stand		1 / 1	69.92 ea

For more of the Brickhouse Collection, please see pages 148 - 149



BEVERAGE & COUNTER
BEVERAGE TUBS



BEVERAGE TUB SET





The ring which holds the tub has a 40.5 cm inside diameter.

BTS2137 black metal stand fits single and double wall beverage tubs.

STAINLESS STEEL WITH BLACK POWDER COATED STAND



Item	Description	Capacity	Min Order/ Case Pack	List Price (€)
SINGLE WALL				
a. BT2137N	Beverage Tub, 51 x 51 x 95 cm, Black Metal Stand	40 Litre	1 / 1	219.31 ea
b. BT21	Beverage Tub, 51 x 51 x 32.5 cm	40 Litre	1 / 1	175.10 ea
c. BTS2137	Black Metal Stand for BT21, BTD21, 55 x 55 x 76 cm	—	1 / 1	104.78 ea
DOUBLE WALL				
 BTSD21	Double Wall Beverage Tub Set, 53.5 x 53.5 x 94.5 cm, Black Metal Stand	26.5 Litre	1 / 1	311.22 ea
 BTD21	Double Wall Beverage Tub, 53.5 x 53.5 x 30.5 cm	26.5 Litre	1 / 1	236.46 ea

BALI COLLECTION™



Hammered, round pattern.

STAINLESS STEEL, DOUBLE WALL BEVERAGE TUBS



Item	Description	Capacity	Min Order/ Case Pack	List Price (€)
BT2013	Oval Beverage Tub, 52 x 34.5 x 22 cm	15 Litre	1 / 1	91.49 ea

DOUBLE WALL BEVERAGE TUB



STAINLESS STEEL, DOUBLE WALL BEVERAGE TUB

Item	Description	Capacity	Min Order/ Case Pack	List Price (€)
BTB1610	Round Double Wall Remington™ Beverage Tub, with Base, 42 x 42 x 24 cm	22.5 Litre	1 / 1	205.44 ea



WAVE COLLECTION™



STAINLESS STEEL, DOUBLE WALL BEVERAGE TUB

Item	Description	Capacity	Min Order/ Case Pack	List Price (€)
a WBT14	Round Double Wall Wave Beverage Tub, 37 x 37 x 19 cm	11.4 Litre	1 / 1	142.49 ea



FOLDING BEVERAGE FRAME



REMINGTON COLLECTION™ STAINLESS STEEL

Dress up your beverage service. Holds tubs/totes.

Frame only, no bottom. Remington Collection™ rice pattern design; mirror finish.

Item	Description	Min Order/ Case Pack	List Price (€)
RS1537	Tote Box Frame, Folds Flat, No Bottom (Fits 1529 or 1537 Tote Boxes on pages 210 - 211), 56 x 40.5 x 20.5 cm	1 / 1	94.21 ea

For more of the Remington Collection, please see pages 44 - 46



BEVERAGE & COUNTER
BEVERAGE TUBS



CONNOISSEUR™ SWIRL CARAFES

Triple wall insulation keeps beverages hot or cold.
Colour tag set included with every carafe.



CONNOISSEUR™ PLASTIC SWIRL WITH THUMB PRESS

Item	Description	Capacity	Min Order/ Case Pack	List Price (€)
547	Carafe, White	2 Litre	1 / 6	36.12 ea
272	Carafe, Black	0.5 Litre	1 / 24	19.03 ea
274	Carafe, Black	1 Litre	1 / 12	29.40 ea
277	Carafe, Black	2 Litre	1 / 6	40.53 ea

COFFEE DECANTERS



FDA approved material. 10-12 cup servings. Individually boxed.



PLASTIC WITH STAINLESS STEEL BASE

Item	Description	Capacity	Min Order/ Case Pack	List Price (€)
18	Black Handle	2 L	1 / 24	21.12 ea

HOTTLES

Contemporary tea service solution.



GLASS & PLASTIC, 9 X 9 X 15 CM

Item	Description	Capacity	Min Order/ Case Pack	List Price (€)
B3650	Black Hotte & Cover	296 ml	24 / 24	3.22 ea

COFFEE SETS & SHAKERS

Designed to organise your gourmet coffee station.
Features embossed lids: Cinnamon, Cocoa, Nutmeg & Vanilla.
Storage caps included.



STAINLESS STEEL, 175 ML CAPACITY

Item	Description	Capacity	Min Order/Case Pack	List Price (€)
a. 758X	3-Pc Shaker Set, Includes: Cinnamon, Cocoa & Nutmeg, Plastic Storage Caps, Chrome Plated Rack	175 ml	1 / 6	43.06 ea
759X	4-Pc Shaker Set, Includes: Cinnamon, Cocoa, Nutmeg & Vanilla, Plastic Storage Caps, Chrome Plated Rack	175 ml	1 / 6	57.98 ea

a



b



FROTHING CUPS

Keep your coffee stations running smoothly with these barista tools.
Fine gourmet coffee tools that keep your operation running smoothly and organised.

STAINLESS STEEL

Item	Description	Capacity	Min Order/Case Pack	List Price (€)
a. 2014	Frothing Cup	355 - 415 ml	1 / 12	12.42 ea
2024	Frothing Cup	590 - 710 ml	1 / 12	14.54 ea
b. 2036	Frothing Cup	0.95 - 1 Litre	1 / 12	20.26 ea

a



b



COFFEE SCOOPS



STAINLESS STEEL, CAPACITY ENGRAVINGS (TBSP)

Item	Description	Capacity	Min Order/Case Pack	List Price (€)
a. 401	Coffee Scoop	15 ml	1 / 12	3.91 ea
b. 402	Coffee Scoop	29.5 ml	1 / 12	4.78 ea

a



b



LATTE GLASS HOLDER



STAINLESS STEEL

Item	Description	Min Order/Case Pack	List Price (€)
LHCN1	Latte Glass Holder, 6.5 x 10 x 10.5 cm	1 / 12	2.86 ea



BEVERAGE & COUNTER
HOT BEVERAGE SERVERS & ACCESSORIES



WRITE-ON™ BAMBOO CUTLERY HOLDERS

Keep your countertops or serving area free of clutter. Chalkboard surface allows for easy labeling. Made of eco-friendly bamboo. Includes chalk.



Item	Description	Min Order/ Case Pack	List Price (€)
a.	CHCBS446 Square, 10 x 10 x 15 cm	1 / 2	14.50 ea
b.	CHCBR557 Round, 12.5 x 12.5 x 18 cm	1 / 2	22.54 ea



MASON JAR CUTLERY HOLDER

- Racks are hand wash recommended
- Glasses are dishwasher safe
- (3) Mason Jars: 650 ml capacity



BLACK POWDER COATED METAL WITH GLASS JARS

Item	Description	Min Order/ Case Pack	List Price (€)
a.	MJRM3 Farmhouse Collection™, 4-Piece Mason Jar Cutlery Holder Set, (3) Mason Jars and Black Powder Coated Rack, 21 x 19.5 x 21 cm	1 / 8	25.78 ea
b.	MJRB3 Meranda Collection™, 4-Piece Mason Jar Cutlery Holder Set, (3) Mason Jars and Black Powder Coated Rack, 22 x 21 x 21 cm	1 / 8	25.78 ea

REPLACEMENT PARTS & ACCESSORIES

MJGLASS	Replacement Mason Jar Glass, 650 ml	1 / 2	5.64 ea
---------	-------------------------------------	-------	---------

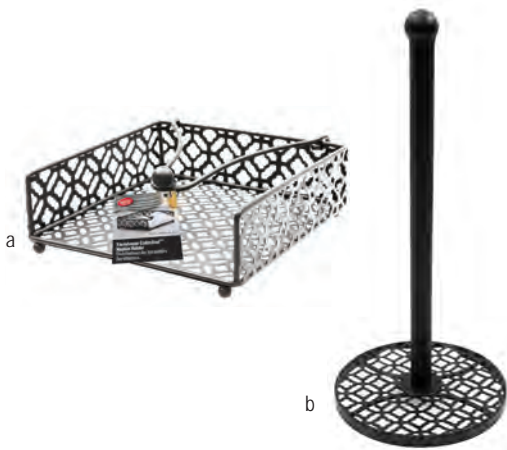


FARMHOUSE™ COLLECTION



BLACK POWDER COATED METAL

Item	Description	Min Order/ Case Pack	List Price (€)
a. HNH772BK	Farmhouse Collection™ Napkin Holder, Black Powder Coated, 18.5 x 18 x 6.5 cm	1 / 6	10.58 ea
b. HPT135BK	Farmhouse Collection™ Paper Towel Holder, Black Powder Coated, 14 x 14 x 34.5 cm	1 / 6	7.25 ea



COUNTERTOP WASTE BINS



STAINLESS STEEL

Keep your countertops or tabletops free from debris. This attractive upscale mini Stainless Steel waste bin saves space and seamlessly matches any décor.

Item	Description	Min Order/ Case Pack	List Price (€)
WM1	Mini Swing Top Waste Bin, 12 x 12 x 17.5 cm	1 / 12	13.08 ea



BEVERAGE & COUNTER
COUNTERTOP SOLUTIONS

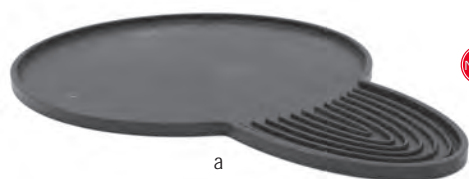


DRIP TRAY



THERMOPLASTIC RUBBER

Catches any condensation, keeping your countertops/tabletops free from water rings.
Anti-slip rubber keeps drip tray from sliding while in use.

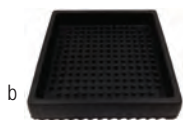


a

NEW

Item	Description	Min Order/ Case Pack	List Price (€)
a. 10CSBK	Condensation Drip Tray for 75, 85, 175 & N175, 25.5 x 38 x 1.5 cm	1 / 12	8.34 ea
b. 4SBK	Square Drip Tray, 11.5 x 11.5 x 2.5 cm	1 / 12	6.86 ea
6SBK	Square Drip Tray, 15 x 15 x 2.5 cm	1 / 12	7.49 ea
c. 6BK	Round Drip Tray, 16.5 x 16.5 x 2.5 cm	1 / 12	7.85 ea
d. 4CSBK	Crescent Drip Tray, 12 x 10 x 1 cm	1 / 24	1.84 ea

NEW



b



c

4CSBK fits bases of beverage dispensers on page 76 & 77



d



CEREAL DISPENSERS



Convenient bulk dispensers help to provide an elegant breakfast buffet.

POLYCARBONATE, STAINLESS STEEL

Display and dispense your cereal in the most sanitary and aesthetically pleasing manner.
Polished Stainless Steel.

Item	Description	Capacity	Min Order/ Case Pack	List Price (€)
69	Cereal Dispenser, 25.5 x 33 x 69 cm	1.5 Litre	1 / 1	199.58 ea



STIR STICK & STRAW DISPENSERS



ACRYLIC, STAINLESS STEEL & FLUTED GLASS

Straws not included except where noted.

	Item	Description	Min Order/ Case Pack	List Price (€)
a.	237	Two-Sided Straw Dispenser, S/S, 24 x 18 x 18.5 cm (Holds up to 500 individually wrapped straws)	1 / 8	53.09 ea
b.	H714CH	Glass Straw Dispenser, Chrome Plated Insert, 11 x 11 x 28 cm (Includes 72 straws)	1 / 6	13.54 ea



BEVERAGE & COUNTER
COUNTERTOP SOLUTIONS



TABLETOP SOLUTIONS

Keep Tabletop at the Top of its Class

Tabletop collections tie together many pieces to bring a unified brand image to your customers. Contemporary in design, our tabletop options greet your guests in a stylish and elegant manner.

SALAD SERVING	Page 96 - 97
---------------	--------------

COLLECTIONS	Page 98 - 101
-------------	---------------

OIL & VINEGAR BOTTLES & DISPENSERS	Page 102 - 103
---------------------------------------	----------------

SALT & PEPPER SHAKERS	Page 104 - 109
--------------------------	----------------

SHAKERS & POURERS	Page 110 - 113
----------------------	----------------

TABLETOP CADDIES	Page 114 - 117
---------------------	----------------

TABLETOP ACCESSORIES	Page 118 - 121
-------------------------	----------------

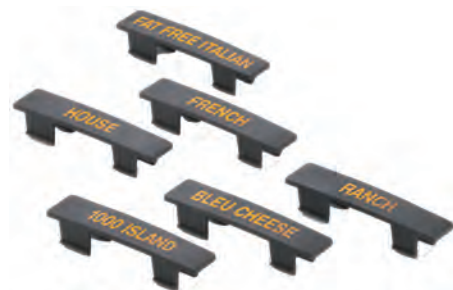


a

b



c



NSF® OPTION™ DISPENSER



Our NSF® Option™ dispenser family is the perfect solution to serving dressings. Easy to read handles and clear bottles make it simple to identify contents. Holding trays keep your bottles organised in a refrigerated unit and are the same dimension as a full size food pan. Slider prevents drips and keeps your countertops clean. Bottle is BPA Free Tritan® material. Ergonomic handle. Unit disassembles for easy cleaning.

1.5 LITRE BPA FREE TRITAN®

Set includes (6) dispensers with black plastic tops, (1) tray, (10) different salad dressing tags.

(Bleu Cheese, Fat Free Ranch, Fat Free Italian, French, House, Italian, Ranch, Russian, Thousand Island and Vinaigrette)

Item	Description	Min Order/Case Pack	List Price (€)
N481	1.5 Litre NSF® Dispenser Set with White Tray	1 / 1	173.64 set
a. N481BK	1.5 Litre NSF® Dispenser Set with Black Tray	1 / 1	173.64 set
b. TN48BK	Plastic Tray, Black, 51 x 32.5 x 6.5 cm (dispensers not included)	1 / 6	17.40 ea
c. N48	1.5 Litre NSF® Dispenser (Dispenser only)	6 / 6	19.13 ea

REPLACEMENT PARTS & ACCESSORIES

CN481	Bleu Cheese	1 / 1	2.52 ea
CN4815	Fat-Free Ranch	1 / 1	2.52 ea
CN4816	Fat-Free Italian	1 / 1	2.52 ea
CN482	French	1 / 1	2.52 ea
CN483	House	1 / 1	2.52 ea
CN484	Italian	1 / 1	2.52 ea
CN486	Ranch	1 / 1	2.52 ea
CN487	Russian	1 / 1	2.52 ea
CN488	Thousand Island	1 / 1	2.52 ea
CN489	Vinaigrette	1 / 1	2.52 ea
CN4810	Honey Mustard	1 / 1	2.52 ea



STACKABLE SAUCE BOATS



Perfectly portioned sauce boats showcase your salad dressings and sauces while stackable design allows for easy and convenient storage. Brushed exterior hides fingerprints. Available in a variety of capacities to suit your needs.

18-8 STAINLESS STEEL, STACKABLE DESIGN

Item	Description	Capacity	Min Order/Case Pack	List Price (€)
9803	Stackable Sauce Boat	90 ml	1 / 24	6.29 ea
9805	Stackable Sauce Boat	150 ml	1 / 24	8.04 ea
9808	Stackable Sauce Boat	235 ml	1 / 24	11.44 ea

NEW



TRADITIONAL SAUCE BOATS



18-8 STAINLESS STEEL

Item	Description	Capacity	Min Order/Case Pack	List Price (€)
7803	Standard Weight Sauce Boat	90 ml	1 / 24	4.95 ea
7805	Standard Weight Sauce Boat	150 ml	1 / 12	6.46 ea
7808	Standard Weight Sauce Boat	235 ml	1 / 6	8.67 ea



WOOD PEPPER MILLS WITH MAHOGANY FINISH



Quality pepper mills at an economical price. Durable, forged steel mechanism to withstand daily use.

WOOD, MAHOGANY FINISH

Individually boxed.

Item	Description	Min Order/Case Pack	List Price (€)
a. PM1908	Pepper Mill, 22 cm	1 / 36	17.74 ea
b. PM1912	Pepper Mill, 32 cm	1 / 24	22.22 ea
c. PM1918	Pepper Mill, 46 cm	1 / 12	30.24 ea



TABLETOP ACCESSORIES
SALAD SERVING



GEMELLI COLLECTION™



815 ML EMBRACING, GREEN TINT GLASS, CHROME PLATED OR
BLACK POWDER COATED METAL RACKS

Glass bottles are dishwasher safe. Racks, Pourers and Tops are hand wash only.

Item	Description	Min Order/ Case Pack	List Price (€)
a. *H918N	3-Pc Gemelli™ Set, Chrome Plated Rack Includes: 918 and 918R	6 / 6	26.23 ea
918	815 ml 2-Pc Gemelli™ Set with Stainless Steel Pourers (599P)	6 / 6	13.15 set

REPLACEMENT PARTS & ACCESSORIES

b. 599P	18-8 Stainless Steel Universal Pourer with Plastic Vent Tube	12 / 60	1.56 ea
c. 597P	Weighted Flip Cap Pourer	12 / 60	2.81 ea



MARBELLA COLLECTION™



ECO-FRIENDLY, RECYCLED GREEN GLASS.

GREEN TINT GLASS, BLACK POWDER COATED METAL RACKS

Glass bottles are dishwasher safe. Racks and Tops are hand wash only.



Item	Description	Min Order/ Case Pack	List Price (€)
a. 617	160 ml Marbella™ Bottle with Cork Stopper (616C)	12 / 12	6.05 ea
b. 615	90 ml Marbella™ Salt & Pepper Shakers with Chrome Plated ABS Tops (615T)	24 / 24	4.20 ea



PRIMA COLLECTION™



180, 250 OR 470 ML SQUARE, CLEAR & GREEN TINT GLASS
CHROME PLATED OR BLACK POWDER COATED METAL RACKS
Glass bottles are dishwasher safe. Racks, Pourers and Tops are hand wash only.

Item	Description	Min Order/ Case Pack	List Price (€)
a. *H916N	250 ml, 3 pc Prima™ Set, Includes: (2) 916 and (1) 916R	6 / 6	29.88 ea
b. *H9085N	815 ml, 3 pc Prima™ Set, Includes: (2) 9085 and (1) 9085R	6 / 6	28.92 ea
c. *H9085NBK	815 ml, 3 pc Prima™ Set, Includes: (2) 9085 and (1) 9085RBK	6 / 6	28.34 ea
d. 60125	170 ml Prima™ Clear Bottle with Stainless Steel Pourer (599P)	12 / 12	5.45 ea
e. 9085	815 ml Prima™ Bottle with Stainless Steel Pourer (599P)	12 / 12	6.31 ea
f. 916	250 ml Prima™ Bottle with Stainless Steel Pourer (599P)	12 / 12	6.48 ea
REPLACEMENT PARTS & ACCESSORIES			
599P	18-8 Stainless Steel Universal Pourer with Plastic Vent Tube	12 / 60	1.56 ea
*H599PTC2	Stainless Steel Pourers with Black Tethered Cap, Pack of 2, for 60125TC, 9085TC & 916TC	12 / 12	3.00 ea
g. *C599PTC	Stainless Steel Pourers with Black Tethered Cap, Pack of 12	1 / 5	18.00 pk



TABLETOP ACCESSORIES COLLECTIONS



EUROPEAN COLLECTION™



170 ML CLEAR GLASS, CHROME PLATED METAL RACKS

Glass bottles are dishwasher safe. Racks and Tops are hand wash only.



Item	Description	Min Order/ Case Pack	List Price (€)
a. 600	170 ml European Bottle with 18-8 Stainless Steel Top (600T)	12 / 12	1.80 ea
600T	18-8 Stainless Steel Top for 600, 600N, 600ST, H600N2	12 / 12	1.03 ea

AUTHENTIC COLLECTION™



ECO-FRIENDLY, RECYCLED GREEN GLASS

Glass bottles are dishwasher safe. Racks Tops are hand wash only.



Item	Description	Min Order/ Case Pack	List Price (€)
a. 6619	160 ml Authentic Collection™ Oil & Vinegar Bottles with 18-8 Stainless Steel Pourers (599P)	12 / 12	5.74 ea
b. 6618	118 ml Authentic Collection™ Salt & Pepper Shakers with Stainless Steel Tops	24 / 24	3.31 ea



REPLACEMENT PARTS & ACCESSORIES

Item	Description	Min Order/ Case Pack	List Price (€)
599P	18-8 Stainless Steel Universal Pourer with Plastic Vent Tube	12 / 12	1.56 ea



BEEHIVE COLLECTION™



TableCraft's decorative Beehive Collection™ updates any tabletop's appearance. Our largest collection has all the elements to enhance your image.

BEEHIVE GLASS DESIGN, STAINLESS STEEL, ABS PLASTIC OR CHROME PLATED TOPS

Glass, ABS & Stainless Steel Tops are dishwasher safe. Chrome Plated Tops are hand wash only.

Item	Description	Min Order/ Case Pack	List Price (€)
a.	BH2 60 ml Beehive Salt & Pepper Shakers with Stainless Steel Tops (154T)	24 / 24	1.30 ea
b.	BH2MPW 60 ml Beehive Salt & Pepper Shakers with Moisture Proof White ABS Tops (MPWT)	24 / 24	2.23 ea
d.	BH3 170 ml Beehive Oil & Vinegar Bottles with 18-8 Stainless Steel Tops (600T)	12 / 12	1.68 ea
e.	BH7 170 ml Syrup Dispenser, Chrome Plated Top	12 / 12	6.14 ea
f.	*HBH860 160 ml Pourer, Pour Spout, S/S Top	12 / 12	4.85 ea

REPLACEMENT PARTS & ACCESSORIES

154T	Stainless Steel Top for BH2	24 / 24	0.84 ea
600T	18-8 Stainless Steel Top for BH3	12 / 12	1.03 ea
260T	Chrome Plated Metal Top for BH4	12 / 12	0.91 ea
1370T	Chrome Plated Metal Top for BH7	1 / 12	7.37 ea
1370G	Gasket for BH7	1 / 12	0.60 ea
800T	Stainless Steel Tops for BH8800	12 / 12	1.46 ea
55T	Stainless Steel Tops for BH855	12 / 12	1.39 ea
57T	Stainless Steel Top for BH857	12 / 12	1.39 ea



TABLETOP ACCESSORIES
COLLECTIONS



OIL & VINEGAR SERVING BOTTLES



Enhance your table setting with attractive oil & vinegar bottles. Available in clear, green or dark green tinted glass to match any décor. Glass bottles are dishwasher safe. Pourers are hand wash only. Cork is hand wash only, dry immediately.

160, 250 OR 500 ML GLASS, STAINLESS STEEL POURER TOPS



Item	Description	Min Order/ Case Pack	List Price (€)
a. 6624	160 ml Recycled Green Glass Bottle with Stainless Steel Pourer (599P)	12 / 12	6.58 ea
b. *H931	250 ml Siena™ Bottle with Stainless Steel Pourer (599P)	6 / 12	8.26 ea
c. *H933	500 ml Sottile™ Clear Glass Bottle with Stainless Steel Pourer (599P)	12 / 12	4.99 ea

REPLACEMENT PARTS & ACCESSORIES

599P	18-8 Stainless Steel Universal Pourer with Plastic Vent Tube	12 / 12	1.56 ea
------	--	---------	---------

OIL & VINEGAR SERVING BOTTLES



235 OR 250 ML GREEN TINT GLASS,
CORK STOPPER TOPS OR CORK STOPPER



Item	Description	Min Order/ Case Pack	List Price (€)
a. *H9220	235 ml Tuscany™ Bottle with Cork Stopper (9220C)	12 / 12	5.59 ea
H92000	325 ml, Olive Oil Bottle with Handle	6 / 6	3.23 ea
H92001	530 ml, Olive Oil Bottle with Cork	6 / 6	3.23 ea
H92003	125 ml, Olive Oil Bottle with Cork	6 / 6	2.02 ea



GLASS SYRUP DISPENSERS



TableCraft's stylish syrup dispensing options are easy to clean, contemporary in design, and a fail-safe solution to serving syrups and thick condiments.

180 ML TEARDROP GLASS, CHROME PLATED METAL, CHROME PLATED OR COLOURED ABS TOPS

Item	Description	Min Order/Case Pack	List Price (€)
a. 406	180 ml Dispenser, Chrome Plated Metal Top	12 / 12	6.91 ea
b. *C406-4	180 ml Dispenser, Chrome Plated Metal Top, (4 per Pack)	4 pk	33.48 pk

160 ML MODERN GLASS, CHROME PLATED METAL OR ABS TOPS

Item	Description	Min Order/Case Pack	List Price (€)
c. 1371	160 ml Dispenser, Chrome Plated Metal Top	12 / 12	8.21 ea



TABLETOP ACCESSORIES
OIL & VINEGAR BOTTLES, DISPENSERS



GLASS JAR WITH ROTATING TOPS



Keep your salt & pepper, spices and more fresh with our new Glass Jars with Rotating Tops. Tops feature a rotating design for (3) dispensing options: fine, medium & coarse.

Item	Description	Min Order/ Case Pack	List Price (€)
HGJ15RT	45 ml Glass Jar with Rotating Top	6 / 6	1.60 ea
HGJ3RT	90 ml Glass Jar with Rotating Top	6 / 6	2.08 ea



RESEALABLE SALT & PEPPER SHAKERS



RESEALABLE GLASS SHAKERS, STAINLESS STEEL CLIP TOP

Item	Description	Min Order/ Case Pack	List Price (€)
a. H15S&P	45 ml Resealable Salt & Pepper Shakers with Stainless Steel Clip Top	6 / 6	2.16 ea
b. H2S&P	60 ml Resealable Salt & Pepper Shakers with Stainless Steel Clip Top	6 / 6	2.64 ea
c. H3S&P	105 ml Resealable Salt & Pepper Shaker with Stainless Steel Clip Top	6 / 6	2.84 ea



c



SALT & PEPPER SHAKERS



Vintage Mason Glass design makes these shakers the perfect addition to your tabletop.

GLASS MASON SHAKERS, STAINLESS STEEL TOP

Item	Description	Min Order/ Case Pack	List Price (€)
------	-------------	-------------------------	----------------

- a. H475S&P 140 ml Mason Salt & Pepper Shakers with Stainless Steel Lid 6 / 6 2.40 ea

REPLACEMENT PARTS & ACCESSORIES

Item	Description	Min Order	List Price (€)
------	-------------	-----------	----------------

- H475T Stainless Steel Top for H475S&P 12 / 12 0.86 ea



a

MINI MASON SALT & PEPPER SHAKERS



Item	Description	Min Order	List Price (€)
------	-------------	-----------	----------------

- a. C170-12 45 ml Mini Mason Salt & Pepper Shaker with Stainless Steel Top, (12 per Pack) 1 / 4 11.02 pk

REPLACEMENT PARTS & ACCESSORIES

Item	Description	Min Order	List Price (€)
------	-------------	-----------	----------------

- 170T Stainless Steel Top for C170-12 12 / 12 0.59 ea



a



TABLETOP ACCESSORIES SALT & PEPPER SHAKERS



SALT & PEPPER SHAKERS



Paneled glass shakers are the most traditional; neutral in design, but high in quality. TableCraft brings you a wide selection with readily available replacement parts.

30 ML PANELED GLASS, STAINLESS STEEL TOPS



a

Item	Description	Min Order/ Case Pack	List Price (€)
a. 150S&P-2	30 ml Paneled Salt & Pepper Shakers with Stainless Steel Tops (150T)	24 / 24	0.79 ea

REPLACEMENT PARTS & ACCESSORIES

150T	Stainless Steel Mushroom Tops for 150S&P-2	24 / 24	0.41 ea
------	--	---------	---------



b

60 ML PANELED GLASS, STAINLESS STEEL TOPS

Item	Description	Min Order/ Case Pack	List Price (€)
b. 155S&P-2	60 ml Paneled Salt & Pepper Shakers with Stainless Steel Tops (150T)	24 / 24	0.89 ea

REPLACEMENT PARTS & ACCESSORIES

150T	Stainless Steel Mushroom Tops for 155S&P-2 & C155-12	24 / 24	0.41 ea
------	--	---------	---------



c

90 ML PANELED GLASS, STAINLESS STEEL TOPS

Item	Description	Min Order/ Case Pack	List Price (€)
c. 156S&P-2	90 ml Paneled Salt & Pepper Shakers with Stainless Steel Tops (156T)	24 / 24	1.39 ea
d. *C156-12	90 ml Paneled Salt & Pepper Shakers with Stainless Steel Tops (156T), 12 per Pack	4 / 12	18.58 pk

REPLACEMENT PARTS & ACCESSORIES

156T	Stainless Steel Mushroom Tops for 156S&P-2 & C156-12	24 / 24	0.58 ea
------	--	---------	---------



d



SALT & PEPPER SHAKERS CONTINUED



45 ML PANELED GLASS, CHROME PLATED ABS TOPS

Item	Description	Min Order/ Case Pack	List Price (€)
a. 80S&P-2	45 ml Paneled Salt & Pepper Shakers with Chrome Plated ABS Tops (80T)	24 / 24	1.49 ea



a



60 ML METRO™ SHAKERS, GLASS, CHROME PLATED TOPS

Item	Description	Min Order/ Case Pack	List Price (€)
b. 81	60 ml Metro Salt & Pepper Shakers with Chrome Plated Metal Tops (83T)	24 / 24	1.01 ea



b

REPLACEMENT PART & ACCESSORIES

83T	Chrome Plated Metal Tops for 81	24 / 24	0.36 ea
-----	---------------------------------	---------	---------



60 ML SQUARE GLASS, STAINLESS STEEL TOPS

Item	Description	Min Order/ Case Pack	List Price (€)
c. 154S&P-2	60 ml Square Salt & Pepper Shakers with Stainless Steel Tops (154T)	24 / 24	1.30 ea
d. *C154-12	60 ml Square Salt & Pepper Shakers with Stainless Steel Tops (154T), 12 per Pack	4 / 12 pk	19.25 pk



c

REPLACEMENT PART & ACCESSORIES

154T	Stainless Steel Tops for 154S&P-2 & C154-12	24 / 24	0.87 ea
------	---	---------	---------



d

TABLETOP ACCESSORIES SALT & PEPPER SHAKERS



SALT & PEPPER SHAKERS CONTINUED



90 ML ROUND GLASS, STAINLESS STEEL TOPS



a

Item	Description	Min Order/ Case Pack	List Price (€)
a. 132S&P	90 ml Round Salt & Pepper Shakers with Stainless Steel Tops (132T)	72 / 72	1.15 ea



b

15 ML CUBE GLASS, CHROME PLATED TOPS



Item	Description	Min Order/ Case Pack	List Price (€)
b. 30S&P	15 ml Cube Salt & Pepper Shakers with Chrome Plated Tops (83T)	24 / 24	0.50 ea

REPLACEMENT PARTS & ACCESSORIES

83T	Chrome Plated Metal Tops for 30S&P	24 / 24	0.36 ea
-----	------------------------------------	---------	---------



c

30 ML EIFFEL TOWER GLASS, CHROME PLATED TOPS



Item	Description	Min Order/ Case Pack	List Price (€)
c. 83S&P	30 ml Eiffel Tower Salt & Pepper Shakers with Chrome Plated Tops (83T)	24 / 24	0.77 ea
d. *C83-12	30 ml Eiffel Tower Salt & Pepper Shakers with Chrome Plated Tops (83T), 12 per Pack	4 / 12	11.45 pk

REPLACEMENT PARTS & ACCESSORIES

83T	Chrome Plated Metal Tops for 83S&P & C83-12	24 / 24	0.36 ea
-----	---	---------	---------



d



SALT & PEPPER SHAKERS CONTINUED



45 ML NOSTALGIA GLASS, STAINLESS STEEL TOPS

Item	Description	Min Order/ Case Pack	List Price (€)
163S&P-2	45 ml Nostalgia Salt & Pepper Shakers with Stainless Steel Tops (163T)	24 / 24	1.27 ea
REPLACEMENT PARTS & ACCESSORIES			
163T	Stainless Steel Tops for 163S&P-2	24 / 24	0.55 ea



RECYCLED GLASS SALT & PEPPER SHAKERS



90 ML RECYCLED GREEN TINT GLASS, STAINLESS STEEL TOPS

Item	Description	Min Order/ Case Pack	List Price (€)
6625	90 ml Shakers with Stainless Steel Top (163T)	24 / 24	3.82 ea
REPLACEMENT PARTS & ACCESSORIES			
163T	Stainless Steel Tops for 6625	24 / 24	0.55 ea



TABLETOP ACCESSORIES
SALT & PEPPER SHAKERS



GLASS SHAKERS WITH PERFORATED / SLOTTED TOPS

Colour-coded plastic caps prevent rust and corrosion and are versatile for any tabletop service or environment. Keep your condiments food safe with these plastic caps that can be used with a variety of jars. Great for tabletop condiments such as grated cheeses or various spices. Chrome plated tops are hand wash only.

180 ML SWIRL GLASS, CHROME PLATED TOPS



Item	Description	Min Order/ Case Pack	List Price (€)
a. 260	180 ml (6 oz) Shaker, Perforated, Chrome Plated Top	36 / 36	1.20 ea
b. 260SL	180 ml (6 oz) Shaker, Slotted, Chrome Plated Top	36 / 36	1.20 ea



PLASTIC SHAKERS WITH CHROME PLATED METAL TOPS

Great for tabletop condiments such as grated cheeses or various spices. Chrome plated tops are hand wash only.

180 ML SWIRL BPA FREE TRITAN™, CHROME PLATED METAL TOPS



Item	Description	Min Order/ Case Pack	List Price (€)
a. P260	180 ml (6 oz) Shaker, Perforated, Chrome Plated Top	24 / 24	2.50 ea
b. P260SL	180 ml (6 oz) Shaker, Slotted, Chrome Plated Top	24 / 24	2.50 ea

MASON JAR SHAKERS



Mason shakers are also now available in a larger, 235 ml capacity with cheese shaker tops to provide a rustic alternative to the traditional cheese and spice shakers.

Item	Description	Min Order/ Case Pack	List Price (€)
280	235 ml. Mason Jar Shaker, Perforated 18-8 Stainless Steel Top	12 / 12	2.96 ea
a. *C280A-3	235 ml. Mason Jar Shaker, Assorted Colour Plastic Tops (3 per Pack)	6 / 12	10.98 pk
b. *C280-4	235 ml. Mason Jar Shaker, Perforated Stainless Steel Tops (4 per Pack)	4 / 12	14.68 pk



Fits our Mini Table Tray Stands (RTT21R) on page 50.



REPLACEMENT PARTS AND ACCESSORIES



FITS 180 ML GLASS / PLASTIC SHAKERS

Item	Description	Min Order/ Case Pack	List Price (€)
a. *C260SLTBK	Slotted Top, Black (Fits 170 ml Shakers)	12 / 72	7.42 dz
b. *C260SLTGR	Slotted Top, Green (Fits 170 ml Shakers)	12 / 72	7.42 dz
*C260SLTRE	Slotted Top, Red (Fits 170 ml Shakers)	12 / 72	7.42 dz
c. *C260SLTWH	Slotted Top, White (Fits 170 ml Shakers)	12 / 72	7.42 dz
260T	Chrome Plated Perforated Top	12 / 12	0.91 ea
260ST	Chrome Plated Slotted Top	12 / 12	0.91 ea
260TBK	Plastic Perforated Top, Black	12 / 12	0.82 ea
d. 260TGR	Plastic Perforated Top, Green	12 / 12	0.82 ea
260TRE	Plastic Perforated Top, Red	12 / 12	0.82 ea
260TWH	Plastic Perforated Top, White	12 / 12	0.82 ea
260SLTBK	Plastic Slotted Top, Black	12 / 12	0.82 ea
260SLTGR	Plastic Slotted Top, Green	12 / 12	0.82 ea
260SLTRE	Plastic Slotted Top, Red	12 / 12	0.82 ea
260SLTWH	Plastic Slotted Top, White	12 / 12	0.82 ea



TABLETOP ACCESSORIES
SHAKERS & POURERS



FLUTED GLASS SHAKERS & POURERS



355 ML FLUTED GLASS, STAINLESS STEEL TOPS

	Item	Description	Min Order/ Case Pack	List Price (€)
a.	800	355 ml Shaker, Perforated Top	24 / 24	2.09 ea
	800-4	355 ml Shaker, Perforated Top (4 per Pack)	1 / 12	7.68 pk
b.	57S	355 ml Pourer, Side Flap Top	24 / 24	2.02 ea
	57S-4	355 ml Pourer, Side Flap Top (4 per Pack)	1 / 1	7.68 pk
	55S	355 ml Pourer, Centre Pour Top	24 / 24	2.02 ea
	55S-4	355 ml Pourer, Centre Pour Top (4 per Pack)	1 / 1	7.68 ea
	*C57S-4	355 ml Pourer, Side Flap Top (4 per Pack)	1 / 4	10.76 pk
c.	657	60 ml S&P Shaker with Stainless Steel Top (657T)	24 / 24	1.30 ea

FLUTED BPA FREE TRITAN® PLASTIC SHAKERS WITH PLASTIC TOPS



355 ML FLUTED BPA FREE TRITAN®, PLASTIC TOPS



	Item	Description	Min Order/ Case Pack	List Price (£)
d.	P800BK	355 ml BPA Free Tritan® Plastic, Perforated Top, Black	24 / 24	3.77 ea
	P800	355 ml BPA Free Tritan® Shaker, Perforated Top	24 / 24	3.77 ea
	P52	355 ml BPA Free Tritan® Shaker, Perforated Top	24 / 24	3.77 ea



FLUTED BPA FREE TRITAN® PLASTIC SHAKERS & POURERS



355 ML BPA FREE TRITAN®, STAINLESS STEEL TOPS

	Item	Description	Min Order/ Case Pack	List Price (€)
a.	P800	355 ml Shaker, Perforated Top	24 / 24	3.77 ea
b.	P52	355 ml Shaker, Fine Perforated Top	24 / 24	3.77 ea



REPLACEMENT PARTS AND ACCESSORIES



FITS 355 ML GLASS / PLASTIC SHAKERS

	Item	Description	Min Order/ Case Pack	List Price (€)
	800T	Stainless Steel Tops for 800 & 800-4	12 / 144	1.46 ea
	57T	Stainless Steel Tops for 57S, 57S-1 & C57S-4	12 / 144	1.39 ea
	55T	Stainless Steel Tops for 55S, 55S-1 & 55S-4	12 / 144	1.39 ea
	52T	Stainless Steel Tops for P52	12 / 144	1.61 ea
	657T	Stainless Steel Tops for 657	24 / 24	0.60 ea
c.	*C800TBK	Perforated Top, Black, 4 mm dia holes	12 / 72	14.40 dz
	*C800TCH	Perforated Top, Chrome Plated Plastic, 4 mm dia holes	12 / 72	20.45 dz



TABLETOP ACCESSORIES
SHAKERS & POURERS



CONDIMENT RACKS



Keep your tabletops organised while saving space and labor. Built-in merchandising ring. Use for squeeze bottles, salt & pepper shakers and cheese shakers.

CHROME PLATED METAL



a



b



c



d

Item	Description	Min Order/ Case Pack	List Price (€)
a. 260R	Chrome Plated Metal Combination Rack, 50 x 20 x 14 cm, Holds (2) S&P Shakers 4 cm dia & (2) Shakers	6 / 6	12.96 ea
b. 406-2R	Chrome Plated Metal Rack, 21 x 18.5 x 9 cm	1 / 6	10.51 ea
c. 1370R	Chrome Plated Metal Rack, 21 x 18.5 x 18.5 cm	1 / 6	13.76 ea
d. SPRR	Chrome Plated Metal Rack, Round, 20.5 x 13.5 x 6 cm, Holds (2) S&P, 5.5 cm dia rings	1 / 6	5.14 ea



CONDIMENT RACKS



Keep your tabletops organised while saving space and labor. Built-in merchandising ring and menu slot. Holds squeeze bottles, shakers, sugar packets, napkin dispensers and menus. Pricing does not include components.

HEAVYWEIGHT CHROME PLATED METAL

Item	Description	Min Order/ Case Pack	List Price (€)
a. 5457112R	Diner Rack Holds Sugar Packets, Two S&P Shakers up to 5.5 cm dia, One 160 ml Pourer, Two 160 ml Squeeze Bottles, One Full or Half Size Napkin Holder, Menu Slot	2 / 2	20.81 ea
b. 592C	Chrome Plated Metal Combination Rack, 25 x 13 x 14 cm, Holds (2) S&P Shakers 3.5 cm dia & (2) 355 ml Standard Squeeze Bottles	1 / 6	7.44 ea
c. 591C	Chrome Plated Metal Combination Rack, 14.5 x 20.5 x 14 cm, Holds (2) S&P and Sugar Packets	1 / 6	5.02 ea



TABLETOP ACCESSORIES

TABLETOP CADDIES

PICK A SIZE THE PERFECT SIZE.

The versatility of the Versa Rack™ makes it the perfect solution for organizing and merchandising your tabletops. Refer to racks on pages 177 - 178.

TO SELECT THE DIAMETER THAT IS
RIGHT FOR YOU, PLACE ITEMS ON THE
DIAGRAM. ITEMS MUST FIT ENTIRELY
WITHIN THE CIRCLE WITHOUT
EXTENDING INTO THE HANDLE AREA.

handle area



BKDIA595 DIA595
BRDIA633 BKDIA633 DIA633
BRDIA679 BKDIA679
BKDIA728 DIA728
BK1780 BKDIA780 DIA780



VERSA RACK™ **CONDIMENT RACKS**



Versa Rack™ condiment racks allow for versatility in your tabletop organisation. To select the diameter that's right for you, place items on the diagram on page 116. Items must fit entirely within the circle without extending into the handle area.

BRUSHED 18-8 STAINLESS STEEL

Merchandising Ring clips on to hold menus or promotional cards.

Item	Description	Min Order/ Case Pack	List Price (€)
a. BRDIA633	16 dia x 25.5 cm, Brushed 18-8 Stainless Steel	2 / 2	24.98 ea
BRDIA679	17.5 dia x 25.5 cm, Brushed 18-8 Stainless Steel	2 / 2	27.50 ea

BLACK POWDER COATED METAL.



Item	Description	Min Order/ Case Pack	List Price (€)
b. BKDIA595	6 x 6 x 25.5 cm, Black	2 / 2	11.74 ea
BKDIA633	16 x 16 x 25.5 cm, Black	2 / 2	12.31 ea
BKDIA679	17 x 17 x 25.5 cm, Black	2 / 2	12.58 ea
BKDIA728	18.5 x 18.5 x 26 cm, Black	2 / 2	13.03 ea

HEAVY GAUGE 18-8 STAINLESS STEEL



Item	Description	Min Order/ Case Pack	List Price (€)
c. DIA595	15 dia x 26 cm	2 / 2	22.78 ea
DIA633	16 dia x 26 cm	2 / 2	24.43 ea
DIA728	18.5 dia x 26 cm	2 / 2	27.82 ea
DIA780	19.5 dia x 26 cm	2 / 2	29.26 ea





CHALKBOARD VASES



CHALKBOARD GLASS, TWINE DECÓR

	Item	Description	Min Order/ Case Pack	List Price (€)
a.	CBV2552	Round Chalkboard Vase, 6.5 dia x 13.5 cm	1 / 24	2.74 ea
b.	CBV6218	Square Chalkboard Vase, 16 x 4.5 x 4.5 cm	1 / 24	2.74 ea



RECYCLED GREEN GLASS VASES



ECO-FRIENDLY, RECYCLED GREEN GLASS

	Item	Description	Min Order/ Case Pack	List Price (€)
a.	6622	Recycled Green Tint Glass Trumpet Vase, 7 dia x 11 cm	24 / 24	2.69 ea
b.	6623	Recycled Green Tint Glass Conical Vase, 7 dia x 11 cm	24 / 24	2.69 ea



SOLAR LANTERN

Lanterns are precharged and will stay illuminated for 8-10 hours. To recharge, place lantern in direct sunlight for 6-8 hours with the power switch in the "on" position. Lanterns will not charge if the switch is in the "off" position. When the switch is in the "on" position, lanterns will automatically turn on in the dark and off in the light. Lanterns may be used both indoors and outdoors, but must be kept dry when used outdoors. No batteries required. Emits 3-5 lumens.

GLASS WITH METAL TOP

	Item	Description	Min Order/ Case Pack	List Price (€)
	SL362	Solar Lantern with Handle, LED, 9.5 x 8.5 x 10 cm	1 / 12	8.44 ea





PREMIUM SUGAR PACKET HOLDERS



BRUSHED STAINLESS STEEL

Item	Description	Min Order/ Case Pack	List Price (€)
a. 1155	5 x 18 cm Round	1 / 12	7.56 ea

BLACK POWDER COATED METAL



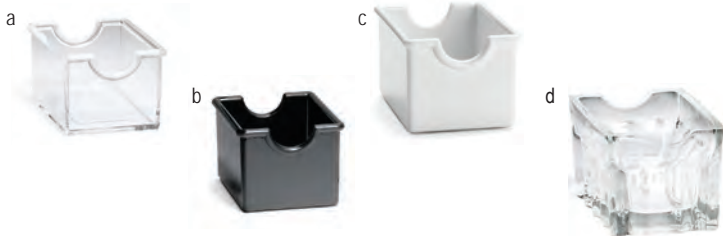
Item	Description	Min Order/ Case Pack	List Price (€)
b. BK155	5 x 6.5 cm Round	12 / 12	3.26 ea
c. BK256	7.5 x 6.5 x 5 cm Rectangular	12 / 12	4.54 ea
d. BK156	7.5 x 6.5 x 5 cm Rectangular	12 / 12	3.58 ea

For more of our basket collection, see pages 143 and 145

ASSORTED



Item	Description	Min Order/ Case Pack	List Price (€)
a. 56C	8.5 x 6.5 x 5 cm Clear, Plastic	24 / 24	1.03 ea
b. 56B	8.5 x 6.5 x 5 cm Black, Plastic	24 / 24	1.03 ea
c. 56W	8.5 x 6.5 x 5 cm White, Plastic	24 / 24	1.03 ea
d. *H121	8.5 x 6.5 x 5 cm Fluted Glass	12 / 12	2.28 ea
e. *C56W	8.5 x 6.5 x 5 cm White, Plastic (6 per Pack)	1 / 12	7.06 pk





CONDIMENT JAR SET



Ideal for sugar, grated cheese, relish, hot mustard, jelly, pickles, peppers, giardiniera and more!

170 ML GLASS, STAINLESS STEEL

Item	Description	Min Order/ Case Pack	List Price (€)
357	170 ml Condiment Jar Set, Includes: Glass Jar, Stainless Steel Lid and Spoon	1 / 48	13.68 ea

SOY SAUCE BOTTLE



150 ML GLASS, PLASTIC TOP



Item	Description	Min Order/ Case Pack	List Price (€)
H888CD	150 ml Soy Sauce Bottles, 9 each per Counter Display (Priced per Bottle)	9 / 9	1.97 ea



NAPKIN DISPENSERS & HOLDER



Napkin dispensers & holders for the tabletop provide an attractive and flexible solution for dispensing universal low-fold and tall-fold napkins. Versatile, one-at-a-time dispensing for any size table. Double-sided.

STAINLESS STEEL

Napkins not included.

	Item	Description	Min Order/ Case Pack	List Price (€)
a.	219	Low-fold, 10 x 11.5 x 14.5 cm	24 / 24	7.22 ea
b.	221	Tall-fold, 10 x 11.5 x 19 cm	24 / 24	7.39 ea



STAINLESS STEEL



	Item	Description	Min Order/ Case Pack	List Price (€)
c.	222	Angled, Brushed Finish	1 / 24	8.14 ea







SERVING SOLUTIONS

Serving Solutions for Every Need

Whether you're serving up elegant appetisers or you're looking for a durable, fail-safe solution, TableCraft has a variety of serving options to help your operation to be more efficient. Choose from a variety of materials, sizes, and colours to create a custom look for any need.

RAMEKINS,
SAUCE CUPS
& ACCESSORIES [Page 124 - 127](#)

APPETISERS, SIDE
SERVERS & FLIGHTS [Page 128 - 139](#)

SERVING
COLLECTIONS [Page 140 - 151](#)

CLASSIC PLASTIC
SERVING BASKETS [Page 152 - 154](#)

HANDWOVEN
BASKETS [Page 155 - 159](#)

DINING ROOM
TOOLS [Page 160 - 163](#)

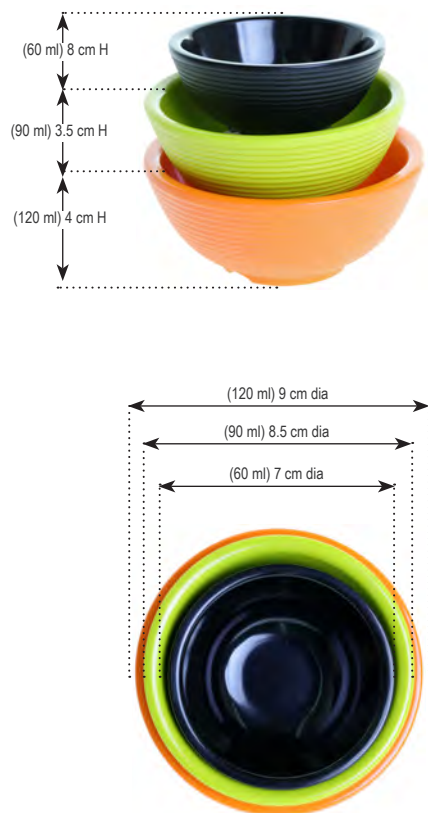


RAMEKINS

Dress up any dish with TableCraft's extensive selection of versatile melamine ramekins. Our family of ramekins offer portion control solutions while complementing your meal.

RIBBED RAMEKINS, MELAMINE, ROUND

Not microwave safe. Safe for temperatures up to 100°C.



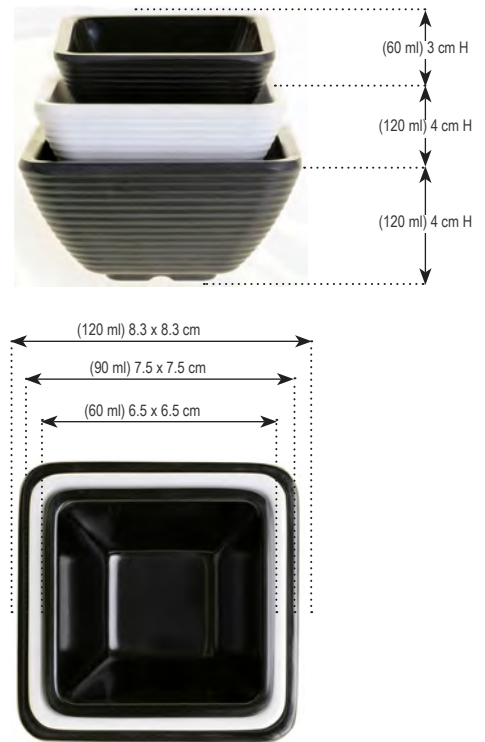
Item	Description	Min Order/ Case Pack	List Price (€)
RAM2RGN	60 ml Ramekin, Green	12 / 12	1.08 ea
RAM3RGN	90 ml Ramekin, Green	12 / 12	1.56 ea
RAM4RGN	120 ml Ramekin, Green	12 / 12	1.92 ea
RAM2RR	60 ml Ramekin, Red	12 / 12	1.08 ea
RAM3RR	90 ml Ramekin, Red	12 / 12	1.56 ea
RAM4RR	120 ml Ramekin, Red	12 / 12	1.92 ea
RAM2RX	60 ml Ramekin, Orange	12 / 12	1.08 ea
RAM3RX	90 ml Ramekin, Orange	12 / 12	1.56 ea
RAM4RX	120 ml Ramekin, Orange	12 / 12	1.92 ea
RAM2RW	60 ml Ramekin, White	12 / 12	1.08 ea
RAM3RW	90 ml Ramekin, White	12 / 12	1.56 ea
RAM4RW	120 ml Ramekin, White	12 / 12	1.92 ea
RAM2RBK	60 ml Ramekin, Black	12 / 12	1.08 ea
RAM3RBK	90 ml Ramekin, Black	12 / 12	1.56 ea
RAM4RBK	120 ml Ramekin, Black	12 / 12	1.92 ea

RIBBED RAMEKINS, MELAMINE, SQUARE

Not microwave safe. Safe for temperatures up to 100°C.



Item	Description	Min Order/ Case Pack	List Price (€)
RAMS2W	60 ml Ramekin, White	12 / 12	1.34 ea
RAMS3W	90 ml Ramekin, White	12 / 12	1.80 ea
RAMS4W	120 ml Ramekin, White	12 / 12	2.23 ea
RAMS2BK	60 ml Ramekin, Black	12 / 12	1.34 ea
RAMS3BK	90 ml Ramekin, Black	12 / 12	1.80 ea
RAMS4BK	120 ml Ramekin, Black	12 / 12	2.23 ea

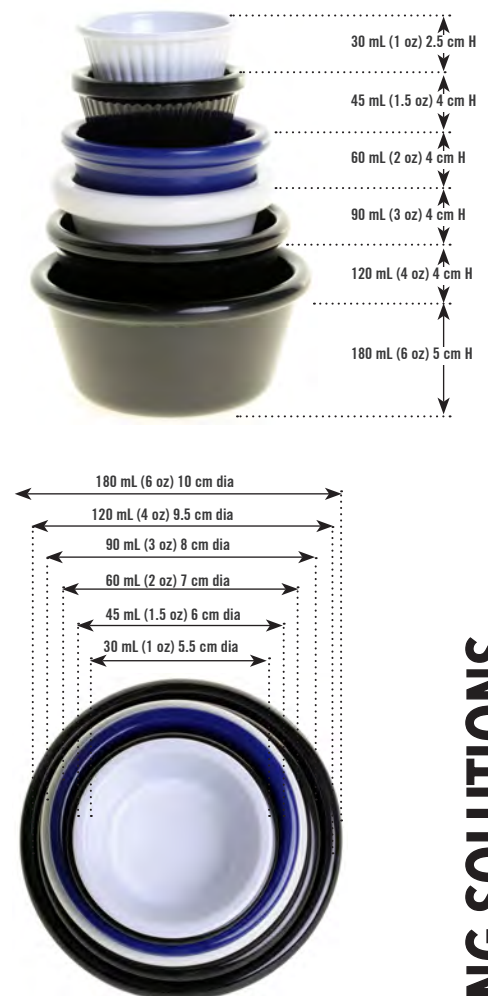


MELAMINE, ROUND

Not microwave safe. Safe for temperatures up to 100°C.



Item	Description	Min Order/ Case Pack	List Price (€)
RAM1FBK	30 ml Ramekin, Fluted, Black	12 / 96	0.60 ea
RAM1FW	30 ml Ramekin, Fluted, White	12 / 96	0.60 ea
RAM15B	45 ml Ramekin, Bone	12 / 96	0.77 ea
RAM15BK	45 ml Ramekin, Black	12 / 96	0.77 ea
RAM15W	45 ml Ramekin, White	12 / 96	0.77 ea
RAM15FB	45 ml Ramekin, Fluted, Bone	12 / 96	0.77 ea
RAM15FBK	45 ml Ramekin, Fluted, Black	12 / 96	0.77 ea
RAM15FW	45 ml Ramekin, Fluted, White	12 / 96	0.77 ea
RAM2B	60 ml Ramekin, Bone	12 / 96	0.91 ea
RAM2BK	60 ml Ramekin, Black	12 / 96	0.91 ea
RAM2W	60 ml Ramekin, White	12 / 96	0.91 ea
RAM2BU	60 ml Ramekin, Blue	12 / 96	0.84 ea
RAM2FB	60 ml Ramekin, Fluted, Bone	12 / 96	0.96 ea
RAM2FBK	60 ml Ramekin, Fluted, Black	12 / 96	0.96 ea
RAM2FW	60 ml Ramekin, Fluted, White	12 / 96	0.96 ea
RAM3B	90 ml Ramekin, Bone	12 / 96	1.10 ea
RAM3BK	90 ml Ramekin, Black	12 / 96	1.10 ea
RAM3W	90 ml Ramekin, White	12 / 96	1.10 ea
RAM3FB	90 ml Ramekin, Fluted, Bone	12 / 96	1.15 ea
RAM3FBK	90 ml Ramekin, Fluted, Black	12 / 96	1.15 ea
RAM3FW	90 ml Ramekin, Fluted, White	12 / 96	1.15 ea
RAM4BK	120 ml Ramekin, Black	12 / 96	1.13 ea
RAM6BK	180 ml Ramekin, Black	12 / 96	1.44 ea



SERVING SOLUTIONS
RAMEKINS, SAUCE CUPS & ACCESSORIES



FROSTONE COLLECTION™



RAMEKINS, MELAMINE

Not microwave safe. Safe for temperatures up to 100°C.



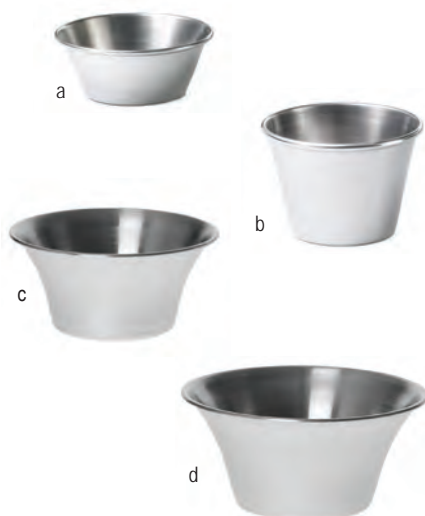
	Item	Description	Min Order/ Case Pack	List Price (€)
a.	MB21	60 ml Square Ramekin, White	12 / 12	2.23 ea
	MB22	45 ml Wavy Ramekin, White	1 / 12	1.82 ea
b.	MB42	105 ml Wavy Ramekin, White	1 / 12	2.35 ea

SAUCE CUPS

Not microwave safe.



STAINLESS STEEL



	Item	Description	Min Order/ Case Pack	List Price (€)
a.	5066	45 ml Sauce Cup, 6.5 cm x 2.5 cm	12 / 576	0.55 ea
	5068	60 ml Sauce Cup, 5.5 cm x 4 cm	12 / 72	0.55 ea
b.	5067	75 ml Sauce Cup, 6.5 cm x 3 cm	12 / 576	0.55 ea
c.	5063	120 ml Sauce Cup, 8 cm x 4 cm	12 / 72	1.13 ea
d.	5064	180 ml Sauce Cup, 9.5 cm x 4.5 cm	12 / 72	1.51 ea

TASTING JARS



Whether you want to add a flight of jars for an appetiser or use a few for condiments and sauces, glass jars are a versatile and attractive solution.

Glasses are dishwasher and microwave safe.



	Item	Description	Min Order/ Case Pack	List Price (€)
	GJ15	45 ml Glass Jar, 5 cm dia x 5.5 cm	1 / 6	1.06 ea
	GJ3	90 ml Glass Jar, 5.5 cm dia x 5.5 cm	1 / 6	1.32 ea



SERVING BOWL WITH DIP CUPS



Clear SAN Plastic. Durable and lightweight design. Easy to clean, dishwasher safe.

Item	Description	Min Order/ Case Pack	List Price (€)
PSB2826	Serving Bowl with (2) Removable Dip Cups, Clear SAN Plastic, 28 x 26 x 13 cm	1 / 8	10.90 ea



SEAFOOD TOOLS

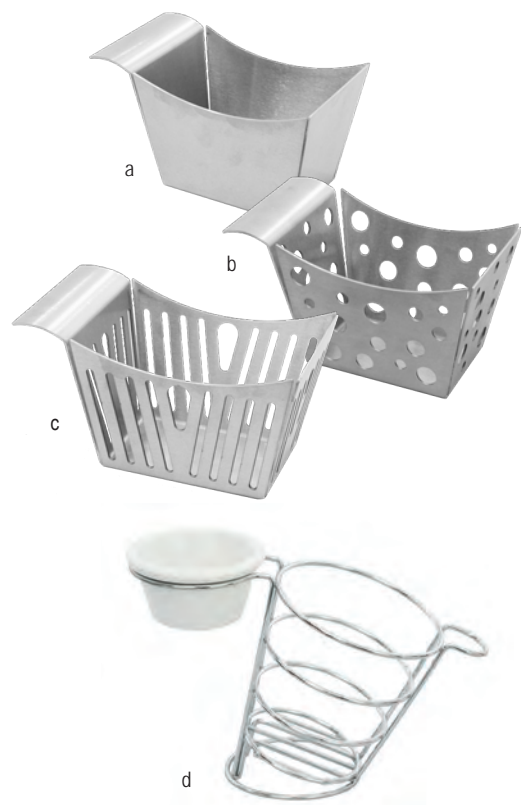


METAL

Item	Description	Min Order/ Case Pack	List Price (€)
a. 513	Round Handle Lobster Crackers, Chrome Plated Cast Iron	1 / 24	2.93 ea
b. 514	Double Jaw Lobster Crackers, Chrome Plated Zinc	1 / 12	2.18 ea
c. 511	Lobster Crackers, Chrome Plated Zinc	1 / 24	9.50 ea
d. 515	Red Enamel Lobster Crackers, Cast Aluminum	1 / 24	3.41 ea
e. *522	Shellfish Forks, Chrome Plated Metal, (4 per pack)	1 / 12	2.83 pk



SERVING SOLUTIONS
RAMEKINS, SAUCE CUPS & ACCESSORIES

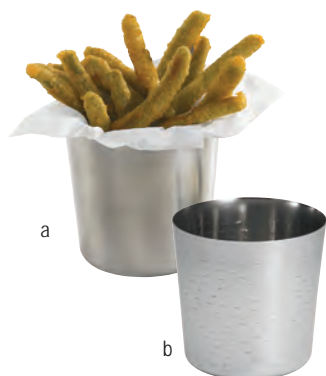


STAINLESS STEEL SIDE BASKETS



Stainless Steel Side Baskets dress up your plate while providing a high volume serving solution. Durable 18-8 Stainless Steel. Not microwave safe.

Item	Description	Min Order/ Case Pack	List Price (€)
a.	SSB Solid Stainless Steel Side Basket, 14 x 8 x 7.5 cm	1 / 6	10.06 ea
b.	SCB Stamped Circle Stainless Steel Side Basket, 14 x 8 x 7.5 cm	1 / 6	11.28 ea
c.	SPB Stamped Pinstriped Stainless Steel Side Basket, 14 x 8 x 7.5 cm	1 / 6	11.28 ea
d.	SMBR Meranda™ Side Basket w/ Ramekin Holder, Stainless Steel Wire, 20 x 9.5 x 12.5 cm (Holds 60 ml or 90 ml plain ramekins) *Ramekin not included	1 / 6	8.04 ea

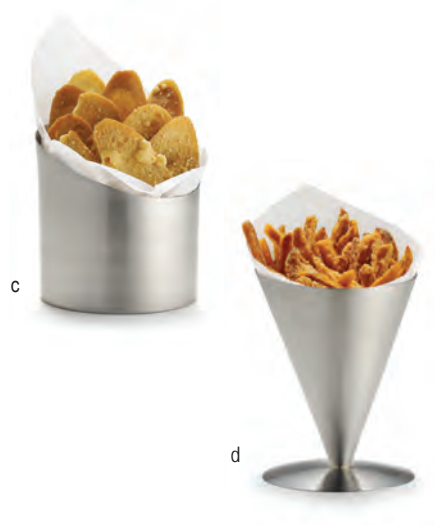


SNACK BOWLS & SIDE SERVERS



STAINLESS STEEL
Not microwave safe.

Item	Description	Min Order/ Case Pack	List Price (€)
a.	AC885S Brushed Stainless Steel Round Cup, 415 ml, 8.5 x 8.5 x 8.5 cm	1 / 12	5.16 ea
b.	AC885R Remington™ Pattern Stainless Steel Round Cup, 415 ml, 8.5 x 8.5 x 8.5 cm	1 / 12	5.16 ea
c.	R44 Stainless Steel Round Cup, 515 ml, 9.5 x 9.5 x 11 cm	1 / 12	21.44 ea
d.	R57 Stainless Steel Cone Basket, 475 ml, 11.5 x 11.5 x 4½ x 17 cm	1 / 12	22.69 ea





SNACK BOWLS & SIDE SERVERS CONTINUED



STAINLESS STEEL

Not microwave safe.

Item	Description	Min Order/ Case Pack	List Price (€)
a. PH35	Stainless Steel Bucket, Hammered Finish, 9 x 6 x 8.5 cm	1 / 12	4.03 ea
b. PHB35	Stainless Steel Bucket with Base, 9 x 9 x 7.5 cm	1 / 12	4.03 ea



TASTING FLIGHTS



An attractive and convenient option to serve your condiments and sides. Available in Stainless Steel with a brushed finish or black powder coated metal. Suggested ramekin & sauce cups below. Design features built-in merchandising ring.

STAINLESS STEEL OR BLACK POWDER COATED

Item	Description	Min Order/ Case Pack	List Price (€)
*WF200BK	Cascade Tasting Flight, Black Powder Coated, Holds 3 Condiments, (60 - 90 ml Ramekins, 5.5 cm dia)	1 / 4	9.67 ea
a. *WF300BK	Tasting Black Powder Coated, Holds 3 Condiments, (60 - 90 ml Ramekins, 5.5 cm dia)	1 / 4	9.67 ea

* Ramekins not included.



Also great for serving wine tastings!

SERVING SOLUTIONS
APPETISERS, SIDE SERVERS & FLIGHTS